

**KSTATE**  
Kansas State University



**PRAIRIE BLOOM**

# 2010 BEDDING PLANT FIELD & CONTAINER TRIALS



**KANSAS STATE UNIVERSITY**  
**HORTICULTURE RESEARCH & EXTENSION**



**Research Report**

**2010**

**Bedding Plant  
Field and Container Trials**

**Dr. Alan Stevens**

**Robin R. Dremsa**

**Department of Horticulture, Forestry and Recreation Resources**

**Kansas State University**



# Table of Contents

	<u>Page</u>
<b>Introduction</b> .....	<b>5</b>
<b>Procedures</b> .....	<b>6</b>
<b>Weather</b> .....	<b>8</b>
<b>Data Collection</b> .....	<b>10</b>
<b>Key to Sources of Plant Material</b> .....	<b>11</b>
<b>Seed Propagated Annuals</b> .....	<b>12</b>
<b>Vegetatively Propagated Annuals</b> .....	<b>26</b>
<b>Container Grown Trials</b> .....	<b>45</b>
<b>Prairie Star Collection List</b> .....	<b>58</b>
<b>Prairie Bloom Collection List</b> .....	<b>62</b>

## Introduction

The importance of the commercial floriculture industry to the economic and social health of Kansas is a known reality. Greenhouse production, retail sale, and landscape installation of flowers all contribute to the Kansas economy and beautify local environments. Plant sales bring in revenue for a variety of businesses, from independent nursery/garden centers, to home improvement, hardware, and grocery store chains. Color programs – the seasonal change of flowering plants – is a strong profit center for landscape maintenance firms, and many golf courses rely on annual plant displays to accent their greens and club houses.

Flowers also add to a community's quality of life when planted to showcase color during the spring, summer, and fall. Flower displays are becoming a common sight in public areas like city parks, sidewalk planters, and government buildings with the intent of making the downtown a more desirable place to shop, work, and live. Businesses also are putting container gardens or bright flower displays by their storefronts, and homeowners contribute to a community's appeal when they decorate their front yards with colorful blooms.

The bedding plant trials conducted by K-State are designed to give citizens recommendations on which plants do well in the Kansas climate through the Prairie Star program. Kansas is the geographic center of the country, but it does not enjoy the average climate of the cool North and hot South. Extreme and sudden changes in heat and cold, rain and drought are common in all four seasons and the wind blows much of the time. Our prairie climate creates unique stresses on flowering plants. There is also variation in climate and soil across Kansas. Eastern Kansas generally has higher rainfall, more vegetation, and neutral to slightly acidic soil while the western portion of the state has low rainfall and more alkaline soils.

Field trials of annual and perennial plants were conducted at four Kansas locations: Olathe, Haysville, Colby and Hays. The four sites are spread across a 400 mile range east to west and 140 miles north to south. The sites encompass two USDA cold hardiness zones, 5 and 6 and two AHS heat tolerance zones, 7 and 8. Container trials of annuals in Olathe started in 2007. As container gardening becomes more widespread, this data has been very useful in discovering some cultivars that perform very well in pots but would not otherwise get good marks in the field trials.

While the Kansas climate provides challenges for growing plants, the desire for new and superior flower cultivars is always present. With the increasing importance of commercial floriculture on the Kansas economy and quality of life, it is pivotal to continue developing and researching cultivars of herbaceous flowering plants for prairie landscapes.

## Procedures

Seeds were sown on site at the K-State Horticulture Research & Extension center in Olathe, KS, in 806 cell packs using Fafard Super-Fine Germinating Mix or Fafard 3B growing media. Vegetatively propagated plant materials were potted directly into 4 ½" round geranium pots filled with Fafard 3B growing media. Production was finished in Olathe and subsequently transported to the other three trial sites. All plants were hardened off with reduced night temperature (<55°F) before planting into the field.

Treflan 5G (5% granular, Trifluralin) was broadcast over the beds and watered in for pre-emergent weed control. The plants were watered on an as-needed basis, but no more than once a week, for the duration of the trial. A minimum of one inch of water was applied at each irrigation. Beds were allowed to dry substantially between watering. At the Olathe site, a 16-8-8 fertilizer was applied before planting, and every two weeks thereafter for a total of five applications, at a rate of 1lb N/1,000 sq ft.

Two applications of an insecticide (Bifenthrin) product were sprayed on the field trials due to thrip damage. This also took care of any budworms before they started damaging flowers. There was some budworm damage observed on several container trials late in the season.

Some cultivars at the Olathe site were grown in a shade structure. This simulates a low light (50% shade) environment without tree or shrub root competition. Some known shade-growing plants (*Coleus*, for example) were only planted in the shade, while others were planted in both sun and shade to compare growth and performance. The container grown shade trials were grown in a greenhouse with shade cover. All other trials were grown in full sun unless otherwise stated in the tables below.

The container trials were planted in 16" or 18" diameter pots, with three 4" pots of vegetative plants or six seed propagated plants in each container. The plants received two applications of a slow-release fertilizer (15-9-12) in addition to weekly fertilizer (20-10-20, 200ppm) injected into the water. The containers were watered when needed, typically twice a week.

## Planting Dates

Horticulture Research & Extension Center - Olathe, Kansas	Week 22
Container trials – Olathe, Kansas	Week 24
John C. Pair Horticultural Center - Haysville, Kansas	Week 23
Agriculture Research Center - Hays, Kansas	Week 22
Agriculture Research Center - Colby, Kansas	Week 22

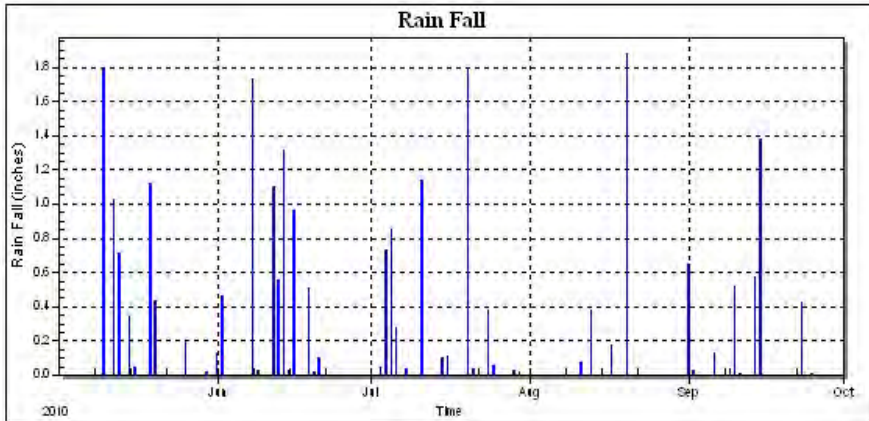
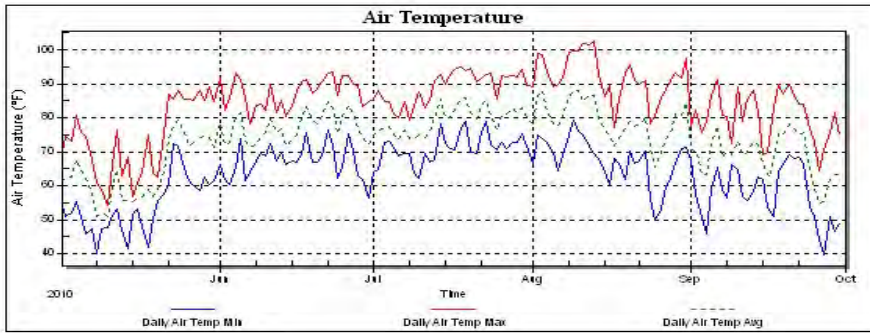
## Weather Conditions

In 2010 it was a cool and wet month of May. Temperatures then quickly increased and June was much hotter than usual. July and August were also consistently hot with occasional rainfall.

	Olathe	Hays	Haysville	Colby
<b>May</b>				
Avg. Max. Temp.	73.7	78.2	75.2	70.4
Avg. Min. Temp.	53.9	48.9	54.8	46.1
Departure	-4.0	+1.4	-0.9	-6.5
Precipitation	7.63	3.39	3.69	2.43
<b>June</b>				
Avg. Max. Temp.	87.4	94.2	90.5	87.6
Avg. Min. Temp.	67.3	64.1	70.0	61.7
Departure	+4.2	+6.5	+13.7	+5.6
Precipitation	6.94	0.60	4.23	2.53
<b>July</b>				
Avg. Max. Temp.	89.0	89.5	92.5	90.3
Avg. Min. Temp.	71.1	62.2	71.3	66.0
Departure	-0.5	-3.8	+3.7	-1.9
Precipitation	5.62	0.43	2.74	3.88
<b>August</b>				
Avg. Max. Temp.	92.1	102.6	95.6	91.6
Avg. Min. Temp.	67.5	67.8	69.2	63.5
Departure	+3.6	+9.8	+1.1	0.0
Precipitation	2.52	0.71	4.06	2.49

\*Precipitation measured in inches, temperatures measured in degrees Fahrenheit.

Weather data from Olathe, KS trial site. May 1 – September 30, 2010.



## Data Collection

Visual ratings of each cultivar were made in June, July and August at each of the trial sites. Cultivars were rated for vigor and floriferousness. Vigor was related to the growth, strength and substance of the vegetative portion of the plant. Floriferousness was defined as the overall visual impact of the floral display, a combination of flower size, number of blooms and how the flowers were displayed on the plant. On plants where it is the foliar display that is of concern (e.g. Coleus, Sweet Potato), the color and visual impact of the leaves – the foliagiferousness – was used to determine the rating.

A scale of 1 - 7 was used to rate each of the cultivars for the two characteristics.

1 = almost dead or no flowers

2 = very poor

3 = poor

4 = acceptable

5 = good

6 = very good

7 = exceptional

The height and spread (width) of each cultivar was measured in mid-August. If no value is listed in the following tables of this report for a particular cultivar, then those plants had died by that point in the season.

The **Prairie Star** program is a compilation of annual plants that have performed very well (overall rating of 6.0 or higher) for two or more years in the K-State bedding plant trials. There is also a **Prairie Bloom** list for perennial plants. The plants on these lists are recommended as the “best of the best” for Kansas gardeners. The Prairie Star collection is organized in three sections: Plants for Flower Display, Plants for Foliage Display, and Plants for Containers. All Prairie Star flowers are recommended for use in both landscape and container plantings. The new Container category lists plants that displayed exemplary performance in the container trials. It must be noted that some of the container plants do not grow well when planted in the flower bed.

## **Key to Sources of Plant Material:**

AAS = All-American Selections  
ADP = American Daylily & Perennials  
BEN = Benary  
BFP = Ball Flora Plant  
DAN = Danziger  
FDS = Fides  
FLR = Florensis  
GSM = Goldsmith  
KFT = Kieft ProSeeds  
Local = Obtained from local sources  
MHD = McHutchison Horticulture Distributors  
PA = PanAmerican Seed  
PPL = Pacific Plug & Liner  
PW = Proven Winners  
SEL = Selecta  
SUN = Suntory  
SYN= Syngenta

# **General Field Trials**

## **Seed Propagated Annuals**

## Seed Propagated Annuals

### *Agastache*

The All-American Selections trial *Agastache* has never performed well when trialed as an annual in the difficult Kansas conditions. This year it received much better ratings when trialed in a container.

Table 1. Performance of select varieties of *Agastache* in Kansas

<b>Cultivar</b>	<b>AAS Trial</b>	<b>V</b>	<b>F</b>	<b>Overall</b>	<b>Ht(in)</b>	<b>Wd (in)</b>	<b>Source</b>
Bronze Foliage	08F01	4.0	4.5	4.3	13	11	AAS

(See also Container Grown – *Agastache*)

### *Basil (Ocimum)*

The Boxwood Basil struggled to get established in the early part of the season, but looked very attractive by the end of summer. The Extension Master Gardeners used it additionally as a formal edging to their herb gardens, which is a perfect way to showcase this plant.

Table 2. Performance of select varieties of *Basil* in Kansas

<b>Cultivar</b>	<b>Color</b>	<b>V</b>	<b>F</b>	<b>Overall</b>	<b>Ht(in)</b>	<b>Wd (in)</b>	<b>Source</b>
Boxwood		6.0	6.0	6.0	12	20	PA

## Begonia

The begonias had a very slow start this year due to weather conditions. The BIG series performed better when grown in the shade structure and looked incredible by late August. The BIG Green Leaf Red was especially attractive. This series is a new addition to the Prairie Star list. Dragon Wing Red had tremendous vigor despite difficult growing conditions and is also now a Prairie Star flower.

Table 3a. Performance of select varieties of Begonia in Kansas, grown in full sun

Cultivar	Color	V	F	Overall	Ht(in)	Wd (in)	Source
BIG	Bronze Leaf Red	5.5	6.0	5.8	10	12	BEN
BIG	Bronze Leaf Rose	5.5	5.8	5.6	10	11	BEN
BIG	Green Leaf Red	5.5	6.0	5.8	12	12	BEN
Brandy Imp.		5.5	6.0	5.8	10	9	BEN
Braveheart	Rose Bicolor	5.8	6.0	5.9	12	14	SYN
Dragon Wing	Red	5.5	5.8	5.6	9	12	Local
Encore III	Rose	5.5	6.0	5.8	10	10	PA
Nightlife	Blush	5.3	5.8	5.5	7	6	BEN
Sprint	Appleblossom	5.3	5.5	5.4	5	6	BEN
Super Olympia	Bicolor	5.3	5.8	5.5	7	6	BEN
Super Olympia	Pink Imp.	5.5	6.0	5.8	10	11	BEN
Tequila		5.5	6.0	5.8	7	7	BEN
Volumia	Pink	5.5	6.0	5.8	10	10	SYN
Volumia	Rose Bicolor	5.5	6.0	5.8	11	11	SYN
Volumia	Scarlet	5.5	6.0	5.8	10	10	SYN
Volumia	White	5.5	6.0	5.8	7	8	SYN
AAS 09F01	Rose	6.0	6.0	6.0	16	13	AAS

Table 3b. Performance of select varieties of Begonia in Kansas, grown in shade structure

Cultivar	Color	V	F	Overall	Ht(in)	Wd (in)	Source
BIG	Bronze Leaf Red	6.0	6.0	6.0	16	16	BEN
BIG	Bronze Leaf Rose	6.0	6.0	6.0	16	16	BEN
BIG	Green Leaf Red	6.3	6.0	6.1	20	16	BEN
Dragon Wing	Red	6.5	5.5	6.0	20	14	Local
Encore III	Rose	5.8	5.8	5.8	14	11	PA
Nightlife	Blush	5.5	6.0	5.8	13	14	BEN
Sprint	Appleblossom	5.5	6.0	5.8	11	12	BEN
Super Olympia	Bicolor	6.0	6.0	6.0	11	10	BEN
Super Olympia	Pink Imp.	5.5	6.0	5.8	13	15	BEN
Tequila		5.0	5.5	5.3	7	9	BEN
Volumia	Pink	5.8	5.5	5.6	9	10	SYN
Volumia	Rose Bicolor	5.8	6.0	5.9	11	11	SYN
Volumia	Scarlet	5.8	6.0	5.9	11	14	SYN

(See also Container Grown – *Begonia*)

### ***Celosia***

The Red in the new Glorious series performed the best of the three colors, although it did have an orange quality to it. Smart Look Red and Romantic did well, with the colorful foliage contributing to a high floriferous rating.

Table 4. Performance of select varieties of *Celosia* in Kansas

<b>Cultivar</b>	<b>Color</b>	<b>V</b>	<b>F</b>	<b>Overall</b>	<b>Ht(in)</b>	<b>Wd (in)</b>	<b>Source</b>
Glorious	Pink	5.0	6.0	5.5	13	15	BEN
Glorious	Red	6.0	6.0	6.0	15	16	BEN
Glorious	Yellow	4.5	5.5	5.0	11	9	BEN
Smart Look	Red	6.0	6.0	6.0	13	17	BEN
Smart Look	Romantica	6.0	6.0	6.0	15	15	BEN
WATCH		6.0	6.0	6.0	15	19	Local

(See also Container Grown – *Celosia*)

### ***Coleus***

The seed *Coleus* did not ever fully recover from the wet spring weather. The roots were seriously compromised by the saturated soil. Versa Lime has been the best growing plant of the series in the last two years of the trials. The plants grown in containers were a more accurate representation of how the cultivars look.

Table 5. Performance of select varieties of *Coleus* in Kansas grown in shade structure

<b>Cultivar</b>	<b>Color</b>	<b>V</b>	<b>F</b>	<b>Overall</b>	<b>Ht(in)</b>	<b>Wd (in)</b>	<b>Source</b>
Versa	Burgundy to Green	5.0	5.0	5.0	12	20	PA
Versa	Crimson Gold	5.0	5.0	5.0	12	12	PA
Versa	Lime	5.5	5.0	5.3	26	26	PA
Versa	Rose to Lime	5.0	5.0	5.0	-	-	PA
Versa	Watermelon	5.0	5.0	5.0	10	9	PA

(See also Vegetatively Propagated and Container Grown – *Coleus*)

### ***Dianthus***

Bouquet Rose is a nice *Dianthus* with a lot of flowers, but would benefit from deadheading and more TLC than is given in the trials.

Table 6. Performance of select varieties of *Dianthus* in Kansas

<b>Cultivar</b>	<b>Color</b>	<b>V</b>	<b>F</b>	<b>Overall</b>	<b>Ht(in)</b>	<b>Wd (in)</b>	<b>Source</b>
Bouquet	Rose	5.5	5.8	5.6	14	11	PA

(See also Vegetatively Propagated – *Dianthus*)

### ***Echinacea***

The Echinaceas are difficult to rate in a similar manner as annual flowers since they are late-blooming perennials. The PowWow Wild Berry is a really exceptional cultivar that blooms early and stays compact. It is loaded with bright flowers even in its first year from seed. It has been added to the Prairie Bloom list of perennials for Kansas.

Table 7. Performance of select varieties of Echinacea in Kansas

<b>Tried</b>	<b>Color</b>	<b>AAS Trial</b>	<b>V</b>	<b>F</b>	<b>Overall</b>	<b>Ht(in)</b>	<b>Wd (in)</b>	<b>Source</b>
Bravado		10F02C-3	6.5	4.5	5.5	25	16	AAS
Magnus		10F02C-2	6.5	4.5	5.5	22	17	AAS
Paradiso Mix		10F02C-1	6.5	4.5	5.5	22	20	AAS
Warm Color Shades		10F02	6.0	5.0	5.5	15	12	AAS
PowWow	Wild Berry		6.5	6.0	6.3	22	15	PA
PowWow	White		6.0	5.0	5.5	18	13	PA

### ***Gaillardia***

Mesa Yellow is a new addition to the Prairie Star list after its second year of excellent growth and bloom in the trials.

Table 8. Performance of select varieties of Gaillardia in Kansas

<b>Cultivar</b>	<b>Color</b>	<b>AAS Trial</b>	<b>V</b>	<b>F</b>	<b>Overall</b>	<b>Ht(in)</b>	<b>Wd (in)</b>	<b>Source</b>
Apricot Shades		08F05	5.8	5.5	5.6	16	27	AAS
Arizona	Red Shades		6.0	5.5	5.8	13	18	BEN
Mesa	Yellow		6.0	6.5	6.3	18	21	PA

### ***Geranium***

The Pinto series does very well across the board in the Kansas trials.

Table 9. Performance of select varieties of Geranium in Kansas

<b>Cultivar</b>	<b>Color</b>	<b>V</b>	<b>F</b>	<b>Overall</b>	<b>Ht(in)</b>	<b>Wd (in)</b>	<b>Source</b>
Pinto	Pink	6.0	6.0	6.0	11	10	SYN
Pinto	Quicksilver	6.0	6.0	6.0	9	12	SYN
Pinto	Red	6.0	6.0	6.0	9	9	SYN
Pinto	Salmon	6.0	6.0	6.0	11	15	SYN
Pinto	White	6.0	6.0	6.0	10	12	SYN

(See also Vegetatively Propagated and Container Grown – *Geranium*)

### ***Gomphrena***

The Las Vegas series is a nice *Gomphrena* for use as a bedding plant. The plants put on a lot of blooms and thrive in the hot weather.

Table 10. Performance of select varieties of *Gomphrena* in Kansas

<b>Cultivar</b>	<b>Color</b>	<b>V</b>	<b>F</b>	<b>Overall</b>	<b>Ht(in)</b>	<b>Wd (in)</b>	<b>Source</b>
Las Vegas	Pink	6.0	6.0	6.0	20	26	BEN
Las Vegas	Purple	6.0	6.0	6.0	22	27	BEN
Las Vegas	White	6.0	6.0	6.0	20	24	BEN

(See also Container Grown – *Gomphrena*)

### ***Helianthus***

Constellation is not a season-long annual, so it is difficult to rate it like the other bedding plants. When it is blooming, it's an outstanding sunflower, but it quickly turns unsightly when the flowers fade.

Table 11. Performance of select varieties of *Helianthus* in Kansas

<b>Cultivar</b>	<b>Color</b>	<b>V</b>	<b>F</b>	<b>Overall</b>	<b>Ht(in)</b>	<b>Wd (in)</b>	<b>Source</b>
Constellation					24	25	SYN

### ***Impatiens***

All the seed *Impatiens* trialed in shade had very good growth and bloom this season. The Jambalaya series has made it on the Prairie Star list.

Table 12. Performance of select varieties of *Impatiens* in Kansas, grown in shade structure

<b>Cultivar</b>	<b>Color</b>	<b>V</b>	<b>F</b>	<b>Overall</b>	<b>Ht(in)</b>	<b>Wd (in)</b>	<b>Source</b>
Jambalaya	Pink	6.0	6.0	6.0	11	19	SYN
Jambalaya	Red	6.0	6.0	6.0	13	16	SYN
Jambalaya	White Imp	6.0	6.0	6.0	14	14	SYN
Super Elfin XP	Red Starburst	6.0	6.0	6.0	14	17	PA
Super Elfin XP	Rose Starburst	6.0	6.0	6.0	13	17	PA
Super Elfin XP	Violet Starburst	6.0	6.0	6.0	18	21	PA

(See also Vegetatively Propagated and Container Grown – *Impatiens*)

### ***Lavender***

The Lavender had difficulty with the wet spring and was not able to get established before the hot weather hit.

Table 13. Performance of select varieties of *Lavender* in Kansas

<b>Cultivar</b>	<b>Color</b>	<b>V</b>	<b>F</b>	<b>Overall</b>	<b>Ht(in)</b>	<b>Wd (in)</b>	<b>Source</b>
Ellagance	Snow	2.5	2.5	2.5	-	-	KFT

### **Marigold**

All the marigolds were excellent in the trials with strong growth and large colorful blooms held above the foliage. The Taishan series has been added the Prairie Star list this year.

Table 14. Performance of select varieties of Marigold in Kansas

<b>Cultivar</b>	<b>Color</b>	<b>V</b>	<b>F</b>	<b>Overall</b>	<b>Ht(in)</b>	<b>Wd (in)</b>	<b>Source</b>
Taishan	Gold	6.5	6.0	6.3	18	19	PA
Taishan	Orange	6.5	6.0	6.3	20	21	PA
Taishan	Yellow	6.5	6.0	6.3	18	21	PA
Moonsong	Deep Orange	6.0	6.3	6.1	16	18	AAS

### **Melampodium**

These two cultivars are already on the Prairie Star list and were grown in demonstration gardens throughout the state to remind people of the high-impact color Melampodium can add to the landscape. Their flower displays come on strong in the late heat of the summer when other plants may fade.

Table 15. Performance of select varieties of Melampodium in Kansas

<b>Cultivar</b>	<b>Color</b>	<b>V</b>	<b>F</b>	<b>Overall</b>	<b>Ht(in)</b>	<b>Wd (in)</b>	<b>Source</b>
Derby		6.0	6.5	6.3	21	24	Local
Million	Gold	6.5	6.5	6.5	21	24	Local

### **Nicotiana**

For the second year Starmaker Deep Lime has been the best performing Nicotiana in the series. Most of the other colors had difficulty getting established.

Table 16. Performance of select varieties of Nicotiana in Kansas

<b>Cultivar</b>	<b>Color</b>	<b>V</b>	<b>F</b>	<b>Overall</b>	<b>Ht(in)</b>	<b>Wd (in)</b>	<b>Source</b>
Starmaker	Appleblossom	4.5	4.5	4.5	6	5	PA
Starmaker	Bright Red	5.0	5.5	5.3	6	5	PA
Starmaker	Deep Lime	6.0	6.0	6.0	9	12	PA
Starmaker	Pink Picotee	5.0	5.8	5.4	8	11	PA
Starmaker	Rose	5.0	5.5	5.3	9	11	PA
Starmaker	White	5.0	5.5	5.3	7	9	PA

## Ornamental Grass

The Carex cultivars stayed fairly small in the beds and should be planted close together for the best appearance. They have performed better when grown in the container trials. Melinis Savannah is late to bloom but has lovely pink flowers that darken as the nights get cooler. Pennisetum White Lancer was impressive with its fast growth and abundant flowers. It was a visitor favorite and so easy to grow!

Table 17. Performance of select varieties of Ornamental Grass in Kansas

Genus	Cultivar	V	F	Overall	Ht(in)	Wd (in)	Source
Carex	Bronco	5.0	5.0	5.0	6	7	KFT
Carex	Amazon Mist	6.0	5.5	5.8	9	9	KFT
Carex	Red Rooster	6.0	5.5	5.8	13	12	KFT
Carex	Prairie Fire	5.5	6.0	5.8	9	12	KFT
Carex	Zora	5.0	5.3	5.1	8	7	BEN
Melinis	Savannah	5.5	6.0	5.8	24	28	Local
Pennisetum	White Lancer	7.0	6.5	6.8	56	60	Local

(See also Vegetatively Propagated and Container Grown – Ornamental Grass)

## Ornamental Millet

Jade Princess is an outstanding plant for its bright green foliage and large textured blooms. It's by far most compact and easy growing Millet ever in the trials. Everyone is drawn to this plant! It is now on the Prairie Star list.

Table 18. Performance of select varieties of Ornamental Millet in Kansas

Cultivar	Color	V	F	Overall	Ht(in)	Wd (in)	Source
Jade Princess		6.5	6.3	6.4	36	25	PA

(See also Container Grown – Ornamental Millet)

## Ornamental Pepper

The Ornamental Peppers add great color with their leaves and fruit, but this year Purple Flash had reduced vigor.

Table 19. Performance of select varieties of Ornamental Pepper in Kansas

Cultivar	Color	V	F	Overall	Ht(in)	Wd (in)	Source
Calico		6.8	6.0	6.4	18	30	PA
Purple Flash		5.0	6.0	5.5	13	14	PA

(See also Vegetatively Propagated – Ornamental Pepper)

## ***Penstemon***

While the Penstemons survived the Kansas conditions, they did not thrive. There were few blooms and they were late to appear.

Table 20. Performance of select varieties of Penstemon in Kansas

<b>Cultivar</b>	<b>AAS Trial</b>	<b>V</b>	<b>F</b>	<b>Overall</b>	<b>Ht(in)</b>	<b>Wd (in)</b>	<b>Source</b>
Red/White Bicolor	10F03	5.0	5.0	5.0	18	10	AAS
Scarlet Queen	10F03C-1	5.0	5.0	5.0	17	11	AAS
Sensation Mix	10F03C-3	5.0	5.0	5.0	22	12	AAS
Tubular Bells Red	10F03C-2	5.0	5.0	5.0	15	8	AAS

## ***Pentas***

The Pentas in the field had a hard time coping with the cold wet spring and early summer. The container grown trials were much more impressive.

Table 21. Performance of select varieties of Pentas in Kansas

<b>Cultivar</b>	<b>Color</b>	<b>V</b>	<b>F</b>	<b>Overall</b>	<b>Ht(in)</b>	<b>Wd (in)</b>	<b>Source</b>
Kaleidoscope	Pink	4.5	5.0	4.8	6	7	BEN
Northern Lights	Lavender	5.5	5.5	5.5	15	15	BEN

(See also Container Grown – *Pentas*)

## Petunia

Many of the seed Petunia varieties had poor vigor early in the season due to saturated soils. Plush Lilac Pearl, Shock Wave Ivory, Shock Wave Purple, and Tidal Wave Silver looked the best by the end of the summer.

Table 22. Performance of select varieties of Petunia in Kansas

Cultivar	Color	AAS Trial	V	F	Overall	Ht(in)	Wd (in)	Source
Debonair	Dusty Rose		6.0	6.0	6.0	11	26	PA
Debonair	Lime Green		5.0	6.0	5.5	7	22	PA
Dreams	Coral Morn		5.0	5.5	5.3	4	6	PA
Easy Wave	Blue		5.5	6.0	5.8	7	25	PA
Easy Wave	Burgundy Star		5.0	6.0	5.5	7	27	PA
Easy Wave	Neon Rose		6.0	6.0	6.0	6	24	PA
Easy Wave	Pink Dawn		6.0	6.0	6.0	8	28	PA
Easy Wave	Plum Vein		6.0	6.0	6.0	10	25	PA
Easy Wave	Red Improved		6.0	6.0	6.0	10	26	PA
Easy Wave	Violet		5.5	6.0	5.8	10	28	PA
Easy Wave	White Imp		5.5	6.0	5.8	5	24	PA
Plush	Blue		6.0	6.0	6.0	10	23	SYN
Plush	Deep Pink		6.3	6.3	6.3	9	28	SYN
Plush	Deep Purple		6.0	6.0	6.0	8	25	SYN
Plush	Deep Red		5.8	6.0	5.9	7	22	SYN
Plush	Lilac Pearl		6.0	7.0	6.5	8	26	SYN
Plush	Purple		6.0	6.0	6.0	6	25	SYN
Plush	Rose		6.0	6.0	6.0	7	26	SYN
Plush	Red		6.0	6.0	6.0	11	27	SYN
Plush	Salmon		6.0	6.3	6.1	9	27	SYN
Plush	White		6.0	6.0	6.0	9	28	SYN
Shock Wave	Coconut		6.5	6.0	6.3	12	31	PA
Shock Wave	Denim		6.0	6.0	6.0	9	27	PA
Shock Wave	Ivory		6.5	6.5	6.5	14	28	PA
Shock Wave	Purple		7.0	6.5	6.8	13	32	PA
Sophistica	Antique Shade		5.3	6.0	5.6	7	17	PA
Tidal Wave	Silver		7.0	6.0	6.5	14	36	PA
Wave	Purple Imp.		5.5	6.0	5.8	7	32	PA
Trailing Type	Burgundy	07BP03	5.5	6.0	5.8	9	28	AAS

(See also Vegetatively Propagated and Container Grown – *Petunia*)

## ***Phlox***

The Phlox trialed for the All-American Selections did not survive in the field trials under Kansas conditions.

Table 23. Performance of select varieties of Phlox in Kansas

<b>Cultivar</b>	<b>AAS Trial</b>	<b>V</b>	<b>F</b>	<b>Overall</b>	<b>Ht(in)</b>	<b>Wd (in)</b>	<b>Source</b>
21st Century Blue	10F04C-1	2.3	2.3	2.3	-	-	AAS
21st Century Blue Star	10F04C-2	2.3	2.3	2.3	-	-	AAS
Blue Shades	10F04	2.5	2.5	2.5	-	-	AAS

(See also Container Grown – *Phlox*)

## ***Plectranthus***

Silver Shield was a little shorter this year than previous trials, but it is still an outstanding foliage plant.

Table 24. Performance of select varieties of Plectranthus in Kansas

<b>Cultivar</b>	<b>Color</b>	<b>V</b>	<b>F</b>	<b>Overall</b>	<b>Ht(in)</b>	<b>Wd (in)</b>	<b>Source</b>
Silver Shield		6.0	6.0	6.0	26	34	PA

(See also Container Grown – *Plectranthus*)

## ***Portulaca (Purslane)***

Although the deer seemed to prefer Sundial Yellow to all the flowers in the trial, these plants bounced back with impressive vigor. By late August there were only beautiful flowers and no indication of damage.

Table 25. Performance of select varieties of Portulaca in Kansas

<b>Cultivar</b>	<b>Color</b>	<b>V</b>	<b>F</b>	<b>Overall</b>	<b>Ht(in)</b>	<b>Wd (in)</b>	<b>Source</b>
Sundial	Yellow	6.3	5.5	5.9	6	24	Local

(See also Vegetatively Propagated and Container Grown – *Portulaca*)

### ***Ptilotus***

Some of the Joey plants were able to fill out and show off their unique flowers by the end of the season. This cultivar does much better in dry western Kansas than at the main trial site in Olathe.

Table 26. Performance of select varieties of *Ptilotus* in Kansas

<b>Cultivar</b>	<b>Color</b>	<b>V</b>	<b>F</b>	<b>Overall</b>	<b>Ht(in)</b>	<b>Wd (in)</b>	<b>Source</b>
Joey		5.5	5.5	5.5	12	24	BEN

### ***Rudbeckia***

Although the *Rudbeckia* struggled in the early weather, they had an impressive flower display. Denver Daisy has very eye-catching blooms with dark inner circles – it is now on the Prairie Star list.

Table 27. Performance of select varieties of *Rudbeckia* in Kansas

<b>Cultivar</b>	<b>Color</b>	<b>V</b>	<b>F</b>	<b>Overall</b>	<b>Ht(in)</b>	<b>Wd (in)</b>	<b>Source</b>
Denver Daisy		6.0	6.5	6.3	18	18	BEN
Tiger Eye	Gold	6.0	6.5	6.3	15	12	GSM

### ***Salvia***

Evolution grew well at locations all over the state. It is extremely vigorous with beautiful lilac flowers.

Table 28. Performance of select varieties of *Salvia* in Kansas

<b>Cultivar</b>	<b>Color</b>	<b>AAS Trial</b>	<b>V</b>	<b>F</b>	<b>Overall</b>	<b>Ht(in)</b>	<b>Wd (in)</b>	<b>Source</b>
Evolution			7.0	6.0	6.5	22	21	Local
<i>Salvia coccinea</i>	Red	09BP02	5.8	6.0	5.9	25	20	AAS

(See also Vegetatively Propagated – *Salvia*)

### ***Sanvitalia***

Million Suns had cheerful little yellow flowers, but not enough of them to make a strong visual impact. The plants were hampered by early weather conditions but improved in the heat.

Table 29. Performance of select varieties of *Sanvitalia* in Kansas

<b>Cultivar</b>	<b>Color</b>	<b>V</b>	<b>F</b>	<b>Overall</b>	<b>Ht(in)</b>	<b>Wd (in)</b>	<b>Source</b>
Million Suns		5.8	5.0	5.4	6	17	BEN

## Snapdragon (*Antirrhinum*)

Rocket Cherry performed well across the state in demonstration gardens.

Table 30. Performance of select varieties of Snapdragon in Kansas

Cultivar	Color	V	F	Overall	Ht(in)	Wd (in)	Source
Rocket	Cherry	6.0	6.0	6.0	18	12	Local

## Talinum

Limon has always had high marks, but the rating this year makes it eligible for the Prairie Star list. Verde is another good cultivar with darker leaves and flowers.

Table 31. Performance of select varieties of Talinum in Kansas

Cultivar	Color	V	F	Overall	Ht(in)	Wd (in)	Source
Limon		6.0	6.0	6.0	36	32	PA
Verde		6.3	6.0	6.1	36	36	PA

## Vinca

The Vincas looked outstanding this season, especially considering they sustained thrip damage in June. There are some great new colors in the Titan series. The Apricot is especially unique as it fades from dark to light and gives the appearance of a medley of colors. The flower size of the Pacifica XP colors was very impressive. All the series are already on the Prairie Star list.

Table 32. Performance of select varieties of Vinca in Kansas

Cultivar	Color	AAS Trial	V	F	Overall	Ht(in)	Wd (in)	Source
Cooler	Peppermint		7.0	6.5	6.8	16	21	Local
Cooler	Raspberry		7.0	6.0	6.5	19	24	Local
Cora	Punch		7.0	6.3	6.6	19	24	Local
Pacifica XP	Cranberry		7.0	6.0	6.5	18	20	PA
Pacifica XP	Deep Orchid		7.0	6.0	6.5	16	20	PA
Pacifica XP	Orange		7.0	6.0	6.5	18	20	PA
Pacifica XP	Really Red		6.5	6.0	6.3	18	23	PA
Pacifica XP	White		7.0	6.5	6.8	14	25	PA
Titan	Apricot		7.0	6.5	6.8	16	24	PA
Titan	Dark Red		7.0	6.0	6.5	20	22	PA
Titan	Icy Pink		7.0	6.5	6.8	18	20	PA
	Purple (Navy Blue)	09F05	6.5	5.5	6.0	15	17	AAS

## Zinnia

The Queen series is an interesting new zinnia that is very well suited to cut flower use. Visitors were very drawn to the colors up close but they would not be as eye-catching in landscape beds. The Zahara series has made it on the Prairie Star list. These compact plants provide a great array of color, although the Starlight Rose tends to be predominantly white when the temperatures are extremely hot.

Table 33. Performance of select varieties of Zinnia in Kansas

Cultivar	Color	AAS Trial	V	F	Overall	Ht(in)	Wd (in)	Source
Benary's Giant	Wine		6.5	6.0	6.3	38	34	BEN
Queen	Lime		6.5	6.0	6.3	33	34	BEN
Queen	Red Lime		6.5	6.0	6.3	31	23	BEN
Star	Orange		7.0	5.5	6.3	16	26	PA
Zahara	Double Cherry	2011 Winner	7.0	5.5	6.3	13	24	AAS
Zahara	Double Fire	2011 Winner	7.0	5.5	6.3	12	24	AAS
Zahara	Fire		7.0	5.8	6.4	16	21	PW
Zahara	Scarlet		6.0	6.0	6.0	15	26	PW
Zahara	Starlight Rose		7.0	5.8	6.4	17	28	PA
Zahara	Yellow		7.0	5.5	6.3	16	28	PW
Zahara	Starlight Rose		6.5	6.0	6.3	38	34	PA

(See also Vegetatively Propagated – *Zinnia*)

# **General Field Trials**

**Vegetatively  
Propagated Annuals**

## Vegetatively Propagated Annuals

### *Ageratum*

The Artist Ageratums are excellent cultivars that are very vigorous growers. The series has now been added to the Prairie Star list.

Table 34. Performance of select varieties of *Ageratum* in Kansas

<b>Cultivar</b>	<b>Color</b>	<b>V</b>	<b>F</b>	<b>Overall</b>	<b>Ht(in)</b>	<b>Wd (in)</b>	<b>Source</b>
Artist	Blue	6.5	6.0	6.3	11	22	PW
Artist	Purple	6.5	6.0	6.3	11	22	PW

### *Angelonia*

The Angelonias looked very good this year despite an early infestation of thrips. The Angelface series has now been added to the Prairie Star list. Angelmist Spreading Purple Improved was an especially nice cultivar with vigorous growth and prolific flowers.

Table 35. Performance of select varieties of *Angelonia* in Kansas

<b>Cultivar</b>	<b>Color</b>	<b>V</b>	<b>F</b>	<b>Overall</b>	<b>Ht(in)</b>	<b>Wd (in)</b>	<b>Source</b>
Angelface	Dark Violet	6.5	6.0	6.3	25	18	PW
Angelface	Dresden Blue	6.5	6.0	6.3	27	21	PW
Angelface	Wedgwood Blue	6.5	6.0	6.3	24	21	PW
Angelface	Blue Imp	6.5	6.0	6.3	24	27	PW
Angelface	White	6.5	6.0	6.3	28	30	PW
AngelMist	Spreading Purple Imp	6.5	6.5	6.5	15	26	BFP

(See also, Container Grown – *Angelonia*)

### *Anisodonteia*

The Slightly Strawberry had strong growth but few flowers. It had difficulty blooming through the hot summer.

Table 36. Performance of select varieties of *Anisodonteia* in Kansas

<b>Cultivar</b>	<b>Color</b>	<b>V</b>	<b>F</b>	<b>Overall</b>	<b>Ht(in)</b>	<b>Wd (in)</b>	<b>Source</b>
Slightly Strawberry		6.5	5.0	5.8	28	36	PW

### ***Argyranthemum***

The *Argyranthemum*s had strong growth and the Reflection Pink in particular had a very good year, earning a 6.0 rating – an uncommon feat for these plants in Kansas!

Table 37. Performance of select varieties of *Argyranthemum* in Kansas

<b>Cultivar</b>	<b>Color</b>	<b>V</b>	<b>F</b>	<b>Overall</b>	<b>Ht(in)</b>	<b>Wd (in)</b>	<b>Source</b>
Angelic	Fuchsia	5.0	4.5	4.8	6	7	DAN
Angelic	Lemon Pastel	5.0	5.0	5.0	9	14	DAN
Mars		6.0	5.0	5.5	13	22	DAN
Reflection	Pink	6.5	5.5	6.0	17	24	DAN
Reflection	Yellow Cream	5.5	5.0	5.3	10	9	DAN

### ***Aubrieta***

Divine Magenta could not hold up to the Kansas heat and did not survive through the season.

Table 38. Performance of select varieties of *Aubrieta* in Kansas

<b>Cultivar</b>	<b>Color</b>	<b>V</b>	<b>F</b>	<b>Overall</b>	<b>Ht(in)</b>	<b>Wd (in)</b>	<b>Source</b>
Divine	Magenta	4.0	4.0	4.0	-	-	PW

### ***Begonia***

(See Seed Propagated and Container Grown – *Begonia*)

### ***Bidens***

The *Bidens* cultivars did not have much bloom by the end of the season. Goldilocks Rocks maintained good vigor, but Yellow Charm struggled in the hot weather.

Table 39. Performance of select varieties of *Bidens* in Kansas

<b>Cultivar</b>	<b>Color</b>	<b>V</b>	<b>F</b>	<b>Overall</b>	<b>Ht (in)</b>	<b>Wd (in)</b>	<b>Source</b>
Yellow Charm		3.5	3.0	3.3	4	12	DAN
Goldilocks Rocks		6.0	4.5	5.3	9	16	PW

## ***Bracteantha***

The Dreamtime series had a respectable performance in the trial but did not bloom in abundance throughout the season.

Table 40. Performance of select varieties of *Bracteantha* in Kansas

<b>Cultivar</b>	<b>Color</b>	<b>V</b>	<b>F</b>	<b>Overall</b>	<b>Ht(in)</b>	<b>Wd (in)</b>	<b>Source</b>
Dreamtime	Jumbo Light Pink	5.0	5.0	5.0	4	6	BFP
Dreamtime	Jumbo Pure White	5.0	5.0	5.0	5	6	BFP
Dreamtime	Jumbo Red Ember	5.0	5.0	5.0	4	5	BFP

## ***Calibrachoa***

(See Container Grown – *Calibrachoa*)

## ***Canna***

Several of the tissue culture Cannas had excellent performances for the second year and now qualify for the Prairie Star list. These include Chocolate Sunrise, Magic Pink, Rosita and Shining Diva. (If some of the experimental cultivars get released to the market, they too will be added.) These Cannas are short in stature but loaded with colorful flowers.

Table 41. Performance of select varieties of *Canna* in Kansas

<b>Cultivar</b>	<b>Color</b>	<b>V</b>	<b>F</b>	<b>Overall</b>	<b>Ht(in)</b>	<b>Wd (in)</b>	<b>Source</b>
Blushing Diva		6.0	5.5	5.8	38	36	MHD
Chocolate Sunrise		6.0	6.0	6.0	38	36	MHD
Exp 1	Yellow	6.3	6.5	6.4	34	30	MHD
Magic Pink		6.5	6.0	6.3	47	42	MHD
PH1		5.0	6.0	5.5	30	23	MHD
PH2		7.0	6.3	6.6	50	38	MHD
PH3		7.0	6.0	6.5	58	42	MHD
PH5		7.0	6.0	6.5	51	46	MHD
Rosita		7.0	5.5	6.3	46	38	MHD
Shining Diva		6.5	5.5	6.0	43	38	MHD
Tropicana		6.0	7.0	6.5	61	39	Local
Bronze Leaf		7.0	5.0	6.0	75	58	Local

## ***Chrysocephalum***

The Chrysocephalum cultivars are great plants for their unique foliage and flowers. The vigor of the plants declined in the heat, but they are still noteworthy.

Table 42. Performance of select varieties of Chrysocephalum in Kansas

<b>Cultivar</b>	<b>Color</b>	<b>V</b>	<b>F</b>	<b>Overall</b>	<b>Ht(in)</b>	<b>Wd (in)</b>	<b>Source</b>
Flambe	Yellow	5.5	6.0	5.8	9	17	PW
Silver Fox		5.5	6.0	5.8	6	14	BFP

## ***Cleome***

Senorita Rosalita continues to be an outstanding Cleome with dense growth and abundant flowers. It's perfect as a tall backdrop in landscape beds.

Table 43. Performance of select varieties of Cleome in Kansas

<b>Cultivar</b>	<b>Color</b>	<b>V</b>	<b>F</b>	<b>Overall</b>	<b>Ht(in)</b>	<b>Wd (in)</b>	<b>Source</b>
Senorita Rosalita		7.0	6.0	6.5	38	36	PW

## ***Coleus***

Most of the ColorBlaze Coleus did very well despite the difficult growing conditions. Many are on the Prairie Star list, with LifeLime as a new addition this year. The Kingswood Torch, while beautiful in color, did not have the vigor of the other cultivars. Alligator Tears looked better planted in the landscape than it did in the container trials.

Table 44. Performance of select varieties of Coleus in Kansas, grown in shade structure

<b>Cultivar</b>	<b>Color</b>	<b>V</b>	<b>F</b>	<b>Overall</b>	<b>Ht(in)</b>	<b>Wd (in)</b>	<b>Source</b>
ColorBlaze	Alligator Tears	6.5	5.5	6.0	26	28	PW
ColorBlaze	Dark Star	6.0	6.5	6.3	24	25	PW
ColorBlaze	Dipt in Wine	6.0	6.0	6.0	24	26	PW
ColorBlaze	Kingswood Torch	5.0	6.0	5.5	26	23	PW
ColorBlaze	LifeLime	6.0	6.0	6.0	27	26	PW
ColorBlaze	Royal Glissade	6.5	6.0	6.3	36	26	PW
ColorBlaze	Sedona	6.8	6.0	6.4	36	28	PW
Limon Blush		6.0	5.5	5.8	30	18	PW

(See also Seed Propagated and Container Grown – *Coleus*)

## ***Colocasia***

What's not to love about these *Colocasia* cultivars? In full sun or shade they are extremely vigorous and add a unique visual quality to the landscape. Both are on the Prairie Star list but they are great to keep around in the trials for their looks!

Table 45. Performance of select varieties of *Colocasia* in Kansas

<b>Cultivar</b>	<b>Color</b>	<b>V</b>	<b>F</b>	<b>Overall</b>	<b>Ht(in)</b>	<b>Wd (in)</b>	<b>Source</b>
Coffee Cups		7.0	5.8	6.4	52	38	PW
Heart of the Jungle		7.0	5.8	6.4	50	46	PW

## ***Cuphea***

While it was a strong grower, Totally Tempted lost some of its flower power as the season wore on.

Table 46. Performance of select varieties of *Cuphea* in Kansas

<b>Cultivar</b>	<b>Color</b>	<b>V</b>	<b>F</b>	<b>Overall</b>	<b>Ht(in)</b>	<b>Wd (in)</b>	<b>Source</b>
Totally Tempted		6.0	5.5	5.8	8	14	PW

## ***Cyperus papyrus***

(See Vegetatively Propagated – Ornamental Grass)

## ***Dahlia***

A Dahlia on the Prairie Star list!? Normally they begin flowering too late in the summer to qualify. But the Dalina Grande series is an exception; Toluca had two years of great ratings and has now been added to the list. The peach-to-yellow color of this cultivar is fantastic. The Dahlias in this series are very strong growers. While the blooming may have lessened in the peak of the summer heat, it did not stop completely and returned again in September.

Table 47. Performance of select varieties of *Dahlia* in Kansas

<b>Cultivar</b>	<b>Color</b>	<b>V</b>	<b>F</b>	<b>Overall</b>	<b>Ht(in)</b>	<b>Wd (in)</b>	<b>Source</b>
Dalina Grande	Colima	6.5	5.5	6.0	15	24	PW
Dalina Grande	Morelia	5.5	5.8	5.6	13	17	PW
Dalina Grande	Tampico	6.5	5.5	6.0	14	20	PW
Dalina Grande	Toluca	6.5	5.5	6.0	14	20	PW

## ***Dianthus***

Table 48. Performance of select varieties of *Dianthus* in Kansas

<b>Cultivar</b>	<b>Color</b>	<b>V</b>	<b>F</b>	<b>Overall</b>	<b>Ht(in)</b>	<b>Wd (in)</b>	<b>Source</b>
Diabunda	Purple	5.5	5.5	5.5	8	8	SYN

(See also Seed Propagated – *Dianthus*)

## ***Diascia***

The *Diascias* did not adapt well to the very hot conditions that followed the cool wet spring weather. A few plants from Flying Colors Red and Trailing Antique Orange made it through the entire season while the others did not.

Table 49. Performance of select varieties of *Diascia* in Kansas

<b>Cultivar</b>	<b>Color</b>	<b>V</b>	<b>F</b>	<b>Overall</b>	<b>Ht(in)</b>	<b>Wd (in)</b>	<b>Source</b>
Flirtation	Pink	4.5	4.0	4.3	-	-	PW
Flirtation	Orange	4.5	4.0	4.3	-	-	PW
Flying Colors	Coral	4.5	4.0	4.3	-	-	PW
Flying Colors	Red	4.8	4.0	4.4	10	18	PW
Flying Colors	Trailing Antique Rose	4.5	4.0	4.3	9	12	PW

## ***Euphorbia***

Whatever the weather, Diamond Frost continues to be an excellent bedding plant for Kansas!

Table 50. Performance of select varieties of *Euphorbia* in Kansas

<b>Cultivar</b>	<b>Color</b>	<b>V</b>	<b>F</b>	<b>Overall</b>	<b>Ht(in)</b>	<b>Wd (in)</b>	<b>Source</b>
Diamond Frost		6.0	6.0	6.0	19	25	PW

(See also Container Grown – *Euphorbia*)

## **Geranium**

The Geraniums suffered a setback early in the season with saturated soils. The root systems had a hard time rebounding afterwards. The plants that did survive had good floriferousness, but lacked strong plant growth.

Table 51. Performance of select varieties of Geranium in Kansas

<b>Cultivar</b>	<b>Color</b>	<b>V</b>	<b>F</b>	<b>Overall</b>	<b>Ht(in)</b>	<b>Wd (in)</b>	<b>Source</b>
Daredevil	Claret	5.5	6.0	5.8	-	-	PW
Daredevil	Fire	5.3	5.8	5.5	-	-	PW
Daredevil	Mulberry	5.5	6.0	5.8	6	9	PW
Daredevil	Orchid	5.5	6.0	5.8	5	5	PW
Daredevil	Rosita	5.5	6.0	5.8	7	8	PW
Daredevil	Salmon	5.5	6.0	5.8	8	6	PW
Daredevil	Snow	5.0	5.0	5.0	3	4	PW

(See also Seed Propagated and Container Grown – *Geranium*)

## **Gerbera**

The Jaguar Gerbera was impressive as a bedding plant. While not all the plants survived the challenging weather conditions, the ones that did continued blooming after two weeks of 100+ degree temperatures.

Table 52. Performance of select varieties of Gerbera in Kansas

<b>Cultivar</b>	<b>Color</b>	<b>V</b>	<b>F</b>	<b>Overall</b>	<b>Ht(in)</b>	<b>Wd (in)</b>	<b>Source</b>
Jaguar	Fire Dark Center	5.8	5.5	5.6	8	12	SYN

(See also Container Grown – *Gerbera*)

## **Hibiscus**

Maple Sugar continues to be an excellent bedding plant, adding foliage height, color and texture to the landscape.

Table 53. Performance of select varieties of Hibiscus in Kansas

<b>Cultivar</b>	<b>Color</b>	<b>V</b>	<b>F</b>	<b>Overall</b>	<b>Ht(in)</b>	<b>Wd (in)</b>	<b>Source</b>
Maple Sugar		6.0	6.0	6.0	46	60	Local

## *Iberis*

The weather conditions were too harsh for the *Iberis* to survive.

Table 54. Performance of select varieties of *Iberis* in Kansas

<b>Cultivar</b>	<b>Color</b>	<b>V</b>	<b>F</b>	<b>Overall</b>	<b>Ht(in)</b>	<b>Wd (in)</b>	<b>Source</b>
Absolutely Amethyst		2.8	2.5	2.6	-	-	PW

## *Impatiens*

While some of the *Impatiens* cultivars had better vigor or floriferousness than the others, the overall scores are very similar. Rockapulco continues to be a good performer in this area. The SunPatiens, while planted later, survived the tough summer in full exposure and should be re-trialed to see if they can qualify for the Prairie Star list.

Table 55a. Performance of select varieties of *Impatiens* in Kansas, grown in shade structure

<b>Cultivar</b>	<b>Color</b>	<b>V</b>	<b>F</b>	<b>Overall</b>	<b>Ht(in)</b>	<b>Wd (in)</b>	<b>Source</b>
Rockapulco	Appleblossom	6.5	5.5	6.0	16	16	PW
Rockapulco	Dark Orange	6.5	5.5	6.0	18	16	PW
Rockapulco	Orchid	6.5	5.5	6.0	19	18	PW
Rockapulco	Purple	6.5	6.0	6.3	20	18	PW
Rockapulco	Red	6.5	5.5	6.0	22	19	PW
Rockapulco	White	6.5	5.5	6.0	23	18	PW
Rockapulco	Rose	6.0	6.5	6.3	17	20	PW
Patchwork	Peach Prism	6.0	6.0	6.0	15	18	BFP
Patchwork	Pink Shades	5.5	6.0	5.8	11	16	BFP

Table 55b. Performance of select varieties of *Impatiens* in Kansas, grown in sun

<b>Cultivar</b>	<b>Color</b>	<b>V</b>	<b>F</b>	<b>Overall</b>	<b>Ht(in)</b>	<b>Wd (in)</b>	<b>Source</b>
SunPatiens	White	6.0	6.0	6.0	14	13	Local
SunPatiens	Magenta	6.0	6.0	6.0	17	14	Local
SunPatiens	Orange	6.0	6.0	6.0	10	12	Local
SunPatiens	Lavender	6.0	6.0	6.0	11	11	Local
SunPatiens	Red	6.0	6.0	6.0	11	11	Local

(See also Seed Propagated and Container Grown–*Impatiens*)

### ***Impatiens, New Guinea***

The New Guinea Impatiens did not perform as well as they usually do. The saturated soil at the beginning of the season hampered their overall growth.

Table 56. Performance of select varieties of New Guinea Impatiens in Kansas, grown in shade structure

<b>Cultivar</b>	<b>Color</b>	<b>V</b>	<b>F</b>	<b>Overall</b>	<b>Ht(in)</b>	<b>Wd (in)</b>	<b>Source</b>
Infinity	Blushing Crimson	5.5	6.0	5.8	9	9	PW
Infinity	Blushing Lilac	5.5	6.0	5.8	9	9	PW
Infinity	Crimson	5.5	6.0	5.8	9	9	PW
Infinity	Dark Salmon Glow	5.5	6.0	5.8	9	10	PW
Infinity	Lavender Imp	5.5	6.0	5.8	9	10	PW
Infinity	Light Purple	5.5	6.0	5.8	10	9	PW
Infinity	Orange	5.5	6.0	5.8	12	12	PW
Infinity	Orange Frost	5.5	6.0	5.8	12	12	PW
Infinity	Pink	5.5	6.0	5.8	10	10	PW
Infinity	Pink Frost	5.5	6.0	5.8	11	12	PW
Infinity	Red	5.5	6.0	5.8	10	10	PW
Infinity	Ruby Flash	5.5	6.0	5.8	13	12	PW
Infinity	Scarlet	5.5	6.0	5.8	11	12	PW
Infinity	White Imp	5.5	6.0	5.8	12	14	PW

(See also Container Grown –*Impatiens, New Guinea*)

### ***Ipomoea (Sweet Potato)***

The Illusion series is a new addition to the Prairie Star list after their second year of excellent marks. The lacy leaves of this series provide some nice interest in addition to the colorful foliage. All the Ipomoea performed very well with the slight exception of Sweet Caroline Green Yellow. The color of this cultivar is unremarkable in a mass planting.

Table 57. Performance of select varieties of Sweet Potato in Kansas

<b>Cultivar</b>	<b>Color</b>	<b>V</b>	<b>F</b>	<b>Overall</b>	<b>Ht(in)</b>	<b>Wd (in)</b>	<b>Source</b>
Illusion	Emerald Lace	6.5	6.5	6.5	16	60	PW
Illusion	Midnight Lace	6.5	6.5	6.5	17	48	PW
Sweet Caroline	Light Green	6.5	6.5	6.5	17	44	PW
Sweet Caroline	Bewitched	6.5	6.5	6.5	18	64	PW
Sweet Caroline	Sweetheart Light Green	6.5	6.5	6.5	15	52	PW
Sweet Caroline	Red	6.5	6.0	6.3	15	52	PW
Sweet Caroline	Green Yellow	6.5	5.0	5.8	16	60	PW
Sweet Caroline	Purple	6.5	6.5	6.5	20	70	PW

(See also Container Grown – *Ipomoea*)

## ***Lantana***

This was a special year in that all the Patriot Lantanas were entered in the trials. Most did very well with the best performers being Dove Wings, Hallelujah, Honeylove, and Parasol. The Luscious series continues to have Prairie Star worthy ratings.

Table 58. Performance of select varieties of Lantana in Kansas

<b>Cultivar</b>	<b>Color</b>	<b>V</b>	<b>F</b>	<b>Overall</b>	<b>Ht(in)</b>	<b>Wd (in)</b>	<b>Source</b>
Luscious	Citrus Blend	6.5	6.3	6.4	29	46	PW
Luscious	Grape	6.5	6.0	6.3	17	40	PW
Luscious	Lemonade	7.0	6.5	6.8	22	48	PW
Luscious	Tropical Fruit	6.5	6.5	6.5	20	38	PW
Patriot	Cherry	6.0	6.0	6.0	13	21	ADP
Patriot	Cowboy	5.5	6.0	5.8	8	12	ADP
Patriot	Deen Day Smith	6.3	6.0	6.1	22	36	ADP
Patriot	Desert Sunset	6.5	6.0	6.3	21	33	ADP
Patriot	Dove Wings	7.0	6.5	6.8	22	54	ADP
Patriot	Firewagon	6.0	6.0	6.0	16	32	ADP
Patriot	Gold Galleon	6.0	6.0	6.0	13	22	ADP
Patriot	Hallelujah	7.0	6.5	6.8	30	62	ADP
Patriot	Honeylove	6.5	6.5	6.5	22	48	ADP
Patriot	Hot Country	6.0	6.0	6.0	19	30	ADP
Patriot	Marc Cathey	7.0	5.5	6.3	25	50	ADP
Patriot	Parasol	7.0	6.0	6.5	24	36	ADP
Patriot	Passion	6.8	5.5	6.1	30	46	ADP
Patriot	Petticoat	6.5	5.8	6.1	26	41	ADP
Patriot	Pony Lollypop	6.0	6.0	6.0	16	30	ADP
Patriot	Pony Red	6.0	6.0	6.0	13	26	ADP
Patriot	Popcorn	6.0	6.5	6.3	17	27	ADP
Patriot	Rainbow	5.5	5.5	5.5	4	10	ADP
Patriot	Sunbeam	6.0	6.5	6.3	23	48	ADP
Patriot Classic	Lemon Meringue	6.5	5.5	6.0	27	36	ADP

(See also Container Grown - *Lantana*)

## ***Leucanthemum***

Daisy May survived but did not thrive in the trials. It would have benefited from deadheading.

Table 59. Performance of select varieties of Leucanthemum in Kansas

<b>Cultivar</b>	<b>Color</b>	<b>V</b>	<b>F</b>	<b>Overall</b>	<b>Ht(in)</b>	<b>Wd (in)</b>	<b>Source</b>
Daisy May		5.0	5.0	5.0	9	9	PW

## ***Lobelia***

Several Lobelias had respectable performances, considering they don't do well in the Kansas heat and humidity. Laguna Sky Blue, Laguna White, and Lucia Dark Blue did the best.

Table 60. Performance of select varieties of Lobelia in Kansas

<b>Cultivar</b>	<b>Color</b>	<b>V</b>	<b>F</b>	<b>Overall</b>	<b>Ht(in)</b>	<b>Wd (in)</b>	<b>Source</b>
Laguna	Heavenly Lilac	2.5	2.5	2.5	-	-	PW
Laguna	Sky Blue	5.0	5.8	5.4	8	14	PW
Laguna	White	5.0	5.8	5.4	7	11	PW
Lucia	Dark Blue	5.0	5.8	5.4	6	12	PW
Lucia	Lavender Blush	5.0	5.3	5.1	5	11	PW

## ***Lobularia***

Two years of outstanding show in the bedding plant trials means that Snow Princess is now on the Prairie Star list. It has been most impressive with its vigor and non-stop white flowers. And to have good ratings state-wide is a real testament to its resilience!

Table 61. Performance of select varieties of Lobularia in Kansas

<b>Cultivar</b>	<b>Color</b>	<b>V</b>	<b>F</b>	<b>Overall</b>	<b>Ht(in)</b>	<b>Wd (in)</b>	<b>Source</b>
Snow Princess		7.0	6.5	6.8	12	24	PW

## ***Mandevilla***

(See Container Grown – *Mandevilla*)

## ***Mercardonia***

GoldDust was a very exciting new addition the trials. Its heat tolerance is remarkable! It produced a carpet of yellow flowers throughout the whole growing season. Can't wait to see how it does next year!

Table 62. Performance of select varieties of Mercardonia in Kansas

<b>Cultivar</b>	<b>Color</b>	<b>V</b>	<b>F</b>	<b>Overall</b>	<b>Ht(in)</b>	<b>Wd (in)</b>	<b>Source</b>
GoldDust		6.5	6.5	6.5	7	19	PW

(See also Container Grown – *Mercardonia*)

## ***Nemesia***

Blue Bird had the best performance of the Nemesias, but it still had a difficult time when the temperatures turned hot.

Table 63. Performance of select varieties of *Nemesia* in Kansas

<b>Cultivar</b>	<b>Color</b>	<b>V</b>	<b>F</b>	<b>Overall</b>	<b>Ht (in)</b>	<b>Wd (in)</b>	<b>Source</b>
Blue Bird		4.5	4.5	4.5	11	11	PW
Compact Innocence		2.5	2.5	2.5	-	-	PW
Compact Pink Innocence		2.8	2.5	2.6	-	-	PW
Sunsatia	Coconut Imp	2.5	2.5	2.5	-	-	PW
Sunsatia	Cranberry IMP	2.5	2.5	2.5	-	-	PW
Sunsatia	Lemon IMP	2.5	2.5	2.5	-	-	PW

## ***Nierembergia***

Augusta Blue Skies is the first *Nierembergia* to be added to the Prairie Star list. It has demonstrated excellent growth in all kinds of weather and is extremely colorful with its cheerful blue flowers.

Table 64. Performance of select varieties of *Nierembergia* in Kansas

<b>Cultivar</b>	<b>Color</b>	<b>V</b>	<b>F</b>	<b>Overall</b>	<b>Ht (in)</b>	<b>Wd (in)</b>	<b>Source</b>
Augusta	Blue Skies	7.0	6.0	6.5	12	14	PW

## ***Ornamental Grass***

Several of the ornamental grasses stood out in the trials this year. The Blue Mohawk is easily the best looking *Juncus* to ever enter the trials. It had superior vigor and a really attractive appearance. All three *Pennisetum*s were very good performers, but *Vertigo* got a lot of attention from visitors due to its bold dark color and impressive size.

Table 65. Performance of select varieties of Ornamental Grass in Kansas

<b>Cultivar</b>	<b>Color</b>	<b>V</b>	<b>F</b>	<b>Overall</b>	<b>Ht (in)</b>	<b>Wd (in)</b>	<b>Source</b>
Carex	Toffee Twist	6.0	6.0	6.0	16	15	PW
Cyperus papyrus	Baby Tut	6.3	6.0	6.1	36	46	PW
Cyperus papyrus	King Tut	6.0	6.0	6.0	50	62	PW
Juncus	Blue Mohawk	6.5	6.0	6.3	23	22	PW
Juncus	Quartz Creek	5.0	5.5	5.3	18	15	PW
Isolepis	Fiber Optic Grass	3.0	3.0	3.0	6	8	PW
Pennisetum	Fireworks	6.0	7.0	6.5	40	30	PW
Pennisetum	Red Riding Hood	7.0	6.5	6.8	50	42	PW
Pennisetum	Vertigo	7.0	6.5	6.8	55	60	PW

(See also, Seed Propagated and Container Grown – Ornamental Grass)

### ***Petchoa***

The Calitunias had very nice flower displays. The vigor was not quite as strong as some of the petunias, but they certainly outperform Calibrachos as bedding plants. The Purple received better ratings when grown in a container.

Table 67. Performance of select varieties of *Petchoa* in Kansas

<b>Cultivar</b>	<b>Color</b>	<b>V</b>	<b>F</b>	<b>Overall</b>	<b>Ht (in)</b>	<b>Wd (in)</b>	<b>Source</b>
Calitunia	Pink	5.5	6.0	5.8	4	19	DAN
Calitunia	Purple	5.5	6.0	5.8	10	23	DAN

(See also Container Grown – *Petchoa*)

### ***Petunia***

Some of the Petunias had difficulty recovering from the saturated soils early in the growing season. The Supertunias had some of the best performances with very vigorous growth, especially from the Vistas. Supertunias Indigo Charm and Sangria Charm were beautiful and show real potential for making the Prairie Star list next season. The Ray Petunias did well in the trials and the entire series has now been added to the Prairie Star list. Soleil Purple, while not as strong in the floriferous category, had remarkably strong growth in the hot weather and earned a high overall rating. The black petunias and Pretty Much Picasso had better performances when trialed in containers.

Table 68. Performance of select varieties of *Petunia* in Kansas

<b>Cultivar</b>	<b>Color</b>	<b>V</b>	<b>F</b>	<b>Overall</b>	<b>Ht(in)</b>	<b>Wd (in)</b>	<b>Source</b>
Black Velvet		5.5	5.5	5.5	6	20	BFP
Phantom		6.0	5.5	5.8	6	20	BFP
Pinstripe		5.5	5.5	5.5	6	20	BFP
Cascadias	Marshmallow Pink	5.5	6.0	5.8	8	24	DAN
Cascadias	Noble Blue	6.0	6.3	6.1	8	28	DAN
Cascadias	Violet Skirt	6.5	6.0	6.3	8	24	DAN
Fortunia	Blue Improved	2.5	2.5	2.5	-	-	FDS
Fortunia	Burgundy Picotee	2.5	2.5	2.5	-	-	FDS
Fortunia	Purple Picotee	6.5	6.5	6.5	11	29	FDS
Fortunia	Purple Vein	3.0	3.5	3.3	-	-	FDS
Fortunia	Red	2.5	2.5	2.5	-	-	FDS
Fortunia	White	6.0	6.5	6.3	9	24	FDS
Hurrah	Blue Veined	5.8	5.8	5.8	8	22	SYN
Littletonia	Bicolor Illusion	6.0	5.8	5.9	6	20	DAN
Littletonia	Blue Vein	6.0	5.5	5.8	6	21	DAN
Littletonia	Dark Eyed Lady	5.0	5.5	5.3	4	12	DAN
Littletonia	Breezy Pink	5.0	6.0	5.5	5	16	DAN
Littletonia	Merlot	6.0	6.0	6.0	5	22	DAN
Littletonia	Pink	6.0	6.0	6.0	5	20	DAN
Littletonia	Purple	6.0	6.0	6.0	5	22	DAN
Littletonia	Purple Blue	6.0	6.0	6.0	5	22	DAN

Littletonia	Red Energy	6.0	6.0	6.0	8	22	DAN
Littletonia	Red Star	5.5	6.0	5.8	6	15	DAN
Littletonia	Rose	6.0	6.0	6.0	8	22	DAN
Littletonia	Shiraz	6.5	6.5	6.5	11	24	DAN
Littletonia	Sweet Dark Pink	6.0	6.0	6.0	6	19	DAN
Littletonia	Sweet Pink	6.0	6.0	6.0	6	21	DAN
Littletonia	Sweet Sherbet	3.0	3.5	3.3	4	10	DAN
Littletonia	Ultra Purple	6.5	6.0	6.3	7	22	DAN
Littletonia	Violet	5.5	5.8	5.6	5	21	DAN
Littletonia	White Grace	6.0	6.0	6.0	6	21	DAN
Petitunia	Rim Purple Dream	5.0	6.0	5.5	7	17	DAN
Picobella	Rose Morn	6.0	6.0	6.0	10	21	SYN
Ramblin	Sugar Plum	5.5	6.0	5.8	7	25	SYN
Ray	Candy Pink	6.0	6.0	6.0	6	25	DAN
Ray	Pink	6.0	6.8	6.4	6	30	DAN
Ray	Purple	6.0	6.0	6.0	7	25	DAN
Ray	Purple Vein	6.0	6.0	6.0	6	23	DAN
Ray	Red	7.0	6.0	6.5	7	27	DAN
Ray	Sunray	6.5	6.0	6.3	7	25	DAN
Ray	White	6.5	6.0	6.3	5	22	DAN
Soleil	Purple	7.0	5.5	6.3	18	32	SEL
Sun Spun	Lavender Star	6.0	6.5	6.3	9	26	BFP
Sun Spun	White	6.0	6.0	6.0	11	28	BFP
Supertunia	Bermuda Beach	5.3	6.0	5.6	4	17	PW
Supertunia	Bordeaux	6.8	6.0	6.4	8	30	PW
Supertunia	Citrus	6.0	6.3	6.1	8	27	PW
Supertunia	Cotton Candy	6.8	6.0	6.4	10	28	PW
Supertunia	Giant Pink	6.5	6.5	6.5	8	32	PW
Supertunia	Indigo Charm	7.0	6.3	6.6	11	33	PW
Supertunia	Lavender Skies	7.0	6.5	6.8	10	32	PW
Supertunia	Mini Appleblossom	7.0	6.3	6.6	10	35	PW
Supertunia	Mini Blue Imp	6.0	5.5	5.8	5	29	PW
Supertunia	Mini Blue Veined	7.0	6.0	6.5	8	30	PW
Supertunia	Mini Bright Pink	6.0	6.0	6.0	7	32	PW
Supertunia	Mini Purple	6.5	6.3	6.4	7	31	PW
Supertunia	Mini Rose Veined	7.0	6.0	6.5	7	31	PW
Supertunia	Mini Silver	6.8	7.0	6.9	10	32	PW
Supertunia	Mini Strawberry Pink Veined	6.5	6.8	6.6	8	29	PW
Supertunia	Pretty Much Picasso	5.0	5.5	5.3	5	18	PW
Supertunia	Raspberry Blast	6.5	6.5	6.5	9	33	PW
Supertunia	Royal Magenta	6.3	6.0	6.1	8	33	PW
Supertunia	Royal Velvet	6.0	6.0	6.0	8	32	PW
Supertunia	Sangria Charm	6.8	6.0	6.4	12	30	PW
Supertunia	Vista Bubblegum	7.0	7.0	7.0	17	40	PW
Supertunia	Vista Fuchsia	7.0	6.8	6.9	13	36	PW
Supertunia	Vista Silverberry	7.0	7.0	7.0	15	36	PW
Supertunia	White	6.0	6.5	6.3	8	30	PW

(See also Seed Propagated and Container Grown – *Petunia*)

### ***Phlox***

Not trialed in the field.

(See Container Grown – *Phlox*)

### ***Portulaca (Purslane)***

Up until now, few *Portulacas* made it on the Prairie Star list because of the fickle nature of the flowers to only open when the sun is out. However, the tremendous vigor and show-stopping color of the Pazazz series has changed this. Yes, the flowers still close up in the evening, but when they are open the resulting display makes up for this shortcoming. The Tangerine color was especially striking and unlike anything else in the trials.

Table 69. Performance of select varieties of *Portulaca* in Kansas

<b>Cultivar</b>	<b>Color</b>	<b>V</b>	<b>F</b>	<b>Overall</b>	<b>Ht(in)</b>	<b>Wd (in)</b>	<b>Source</b>
Pazazz	Jumbo White	6.8	6.0	6.4	6	28	DAN
Pazazz	Jumbo Yellow	6.5	6.0	6.3	10	28	DAN
Pazazz	Pink Glow	6.8	6.0	6.4	13	29	DAN
Pazazz	Ultra Pink	6.5	6.0	6.3	10	28	DAN
Pazazz	Salmon Glow	7.0	6.5	6.8	12	29	DAN
Pazazz	Tangerine	7.0	6.5	6.8	13	29	DAN
Pazazz	Red Flare	7.0	6.5	6.8	11	29	DAN
Pazazz	Vivid Yellow	6.5	6.5	6.5	12	27	DAN

(See also Seed Propagated and Container Grown – *Portulaca*)

### ***Salvia***

The entire Sallyfun series has now been added to the Prairie Star list with all the cultivars demonstrating great growth and bloom. The Sally G series had excellent vigor, but there was more foliage than flower, resulting in lower marks for floriferousness.

Table 70. Performance of select varieties of *Salvia* in Kansas

<b>Cultivar</b>	<b>Color</b>	<b>V</b>	<b>F</b>	<b>Overall</b>	<b>Ht(in)</b>	<b>Wd (in)</b>	<b>Source</b>
Sally G	Fuchsia	7.0	5.5	6.3	34	30	DAN
Sally G	Groovy Magenta	6.5	5.5	6.0	30	25	DAN
Sally G	Magenta	7.0	5.0	6.0	36	32	DAN
Sally G	Red	7.0	5.0	6.0	36	32	DAN
Sallyfun	Blue	6.0	6.5	6.3	24	22	DAN
Sallyfun	Blue Emotion	7.0	6.5	6.8	30	24	DAN
Sallyfun	Blue Tune	6.8	6.5	6.6	23	23	DAN
Sallyfun	White Improved	6.0	7.0	6.5	20	20	DAN

(See also Seed Propagated – *Salvia*)

### ***Scaevola***

The Scavolas were a little smaller than usual this year due to the difficult weather, but they are still very good bedding plants that add a distinctive look. The Whirlwind White continues to struggle a little more than the other cultivars.

Table 71. Performance of select varieties of *Scaevola* in Kansas

<b>Cultivar</b>	<b>Color</b>	<b>V</b>	<b>F</b>	<b>Overall</b>	<b>Ht(in)</b>	<b>Wd (in)</b>	<b>Source</b>
Whirlwind	Blue	6.5	5.5	6.0	11	30	PW
Whirlwind	White	5.3	6.0	5.6	7	17	PW
New Wonder		6.0	6.0	6.0	7	27	PW

### ***Sutera (Bacopa)***

While nice in the early season, the Suterases did not hold up in the heat.

Table 72. Performance of select varieties of *Sutera* in Kansas

<b>Cultivar</b>	<b>Color</b>	<b>V</b>	<b>F</b>	<b>Overall</b>	<b>Ht(in)</b>	<b>Wd (in)</b>	<b>Source</b>
Snowstorm	Blue	4.5	4.5	4.5	3	12	PW
Snowstorm	Pink Imp	4.5	4.5	4.5	4	18	PW

### ***Torenia***

It was a notable year for *Torenia*s in the bedding plant trials. The plots were extremely dense with growth. Unfortunately the number of flowers lessened when it was very hot, but the best bloomers of the bunch were Catalina Blue, Catalina Midnight Blue and Summer Wave Large Silver.

Table 73. Performance of select varieties of *Torenia* in Kansas

<b>Cultivar</b>	<b>Color</b>	<b>V</b>	<b>F</b>	<b>Overall</b>	<b>Ht(in)</b>	<b>Wd (in)</b>	<b>Source</b>
Catalina	Blue	7.0	5.3	6.1	10	25	PW
Catalina	Gilded Grape	7.0	5.0	6.0	8	20	PW
Catalina	Midnight Blue	7.0	5.3	6.1	8	24	PW
Catalina	Pink	7.0	5.0	6.0	10	21	PW
Catalina	White Linen	7.0	5.0	6.0	9	24	PW
Summer Wave	Large Blue	7.0	4.5	5.8	9	22	SUN
Summer Wave	Large Silver	7.0	5.3	6.1	10	22	SUN
Summer Wave	Large Violet	7.0	4.5	5.8	10	22	SUN
Summer Wave	White	7.0	5.0	6.0	10	21	SUN

(See also Container Grown – *Torenia*)

## Verbena

The Verbenas section of the trials seemed to be constantly colorful this year – a particularly good year for the cultivars! Temari Blue and Cherry Red were in the trials for the first time this year and looked very striking, with the Blue cultivar earning an almost perfect rating. A few new additions to the Prairie Star list are Donalena Red Amour, Donalena Violet XL, and Tukana White.

Table 73. Performance of select varieties of Verbena in Kansas

Cultivar	Color	V	F	Overall	Ht(in)	Wd (in)	Source
Aztec	Blue Velvet	6.0	6.0	6.0	9	24	BFP
Donalena	Blue Soul	6.5	6.5	6.5	9	33	DAN
Donalena	Bordeaux Soul	6.0	6.0	6.0	8	27	DAN
Donalena	Duo Glossy Red	6.5	6.0	6.3	11	30	DAN
Donalena	Pink Soul	6.5	6.0	6.3	9	30	DAN
Donalena	Red Amour	6.5	6.0	6.3	10	32	DAN
Donalena	Twinkle Purple	7.0	6.0	6.5	12	32	DAN
Donalena	Twinkle Red	6.0	6.0	6.0	12	32	DAN
Donalena	Violet XL	6.5	6.5	6.5	10	32	DAN
Superbena	Burgundy	7.0	6.0	6.5	13	38	PW
Superbena	Coral Red (Imp)	6.5	6.0	6.3	12	36	PW
Superbena	Dark Blue	7.0	6.5	6.8	13	40	PW
Superbena	Large Lilac Blue	7.0	6.0	6.5	11	40	PW
Superbena	Pink Parfait	6.0	5.5	5.8	12	36	PW
Superbena	Pink Shades	7.0	6.5	6.8	14	41	PW
Superbena	Purple	6.5	6.0	6.3	13	42	PW
Superbena Royale	Chambray	6.0	6.0	6.0	11	40	PW
Tapien	BlueViolet	7.0	5.5	6.3	9	40	SUN
Tapien	Salmon	7.0	6.0	6.5	10	40	SUN
Temari	Blue	7.0	6.8	6.9	12	34	SUN
Temari	Cherry Red	7.0	6.5	6.8	12	34	SUN
Tukana	Raspberry	6.0	6.0	6.0	10	28	PW
Tukana	Scarlet	6.5	6.5	6.5	10	28	PW
Tukana	White	7.0	6.3	6.6	8	32	PW
Veralena	Cherry	6.5	6.0	6.3	11	30	DAN
Veralena	Cosmic Blue	6.5	6.3	6.4	10	30	DAN
Veralena	Rouge	6.5	6.0	6.3	10	32	DAN
Veralena	Wedding White	6.0	6.0	6.0	8	28	DAN

## **Zinnia**

The Zahara series has made it on the Prairie Star list. All cultivars have better than average vigor, with Scarlet receiving the best marks for bloom.

Table 74. Performance of select varieties of Zinnia in Kansas

<b>Cultivar</b>	<b>Color</b>	<b>V</b>	<b>F</b>	<b>Overall</b>	<b>Ht(in)</b>	<b>Wd (in)</b>	<b>Source</b>
Zahara	Fire	7.0	5.8	6.4	16	21	PW
Zahara	Scarlet	6.0	6.0	6.0	15	26	PW
Zahara	Yellow	7.0	5.5	6.3	16	28	PW

(See also Seed Propagated – *Zinnia*)

# **Container Grown Trials**

## Container Grown Trials

### *Agastache*

The container grown *Agastache* was in partial sun, which made the foliage less bronze. It still had nice vigor and bloom, and definitely performed better than the plants in the field trials.

Table 75. Container grown performance of select varieties of *Agastache* in Kansas

<b>Cultivar</b>	<b>Color</b>	<b>V</b>	<b>F</b>	<b>Overall</b>	<b>Ht(in)</b>	<b>Wd (in)</b>	<b>Source</b>
Experimental	Bronze Foliage	6.5	6.0	6.3	32	34	AAS

(See also, Seed Propagated – *Agastache*)

### *Angelonia*

These seed propagated *Serena* cultivars were very nice container plants that bloomed consistently throughout the season.

Table 76. Container grown performance of select varieties of *Angelonia* in Kansas

<b>Cultivar</b>	<b>Color</b>	<b>V</b>	<b>F</b>	<b>Overall</b>	<b>Ht(in)</b>	<b>Wd (in)</b>	<b>Source</b>
<i>Serena</i>	Lavender	6.0	6.0	6.0	16	20	AAS
<i>Serena</i>	Purple	6.0	6.0	6.0	16	28	Local
<i>Serena</i>	White	6.0	6.5	6.3	13	20	Local

(See also, Seed Propagated and Vegetatively Propagated – *Angelonia*)

### *Begonia*

Sparkle Scarlet has been added to the Prairie Star list. There's a multitude of very bright, large flowers that cover the plant. It is especially adapted to containers or hanging baskets where its growth habit drapes over the edge. The shape and color of the leaves are a compliment to the colorful flowers. Dragon Wing Red is also a nice container begonia. While not as floriferous as the Sparkle, it is larger and a little more vigorous.

Table 77. Container grown performance of select varieties of *Begonia* in Kansas grown in shade

<b>Cultivar</b>	<b>Color</b>	<b>V</b>	<b>F</b>	<b>Overall</b>	<b>Ht(in)</b>	<b>Wd (in)</b>	<b>Source</b>
Dragon Wing	Red	6.5	6.0	6.3	24	24	Local
Sparkle	Scarlet	6.0	6.5	6.3	12	28	PPL

(See also, Seed Propagated – *Begonia*)

## Calibrachoa

Many of the Calibrachosas had great marks in the container trials. The cultivars that have had two years of high ratings to qualify for the Container portion of the Prairie Star list include Noa Mega Pink and the Superbells Blue, Lavender, Saffron, Yellow and Yellow Chiffon.

Table 78. Container grown performance of select varieties of Calibrachoa in Kansas

Cultivar	Color	V	F	Overall	Ht (in)	Wd (in)	Source
Million Bells	Brilliant Pink	7.0	6.0	6.5	9	20	SUN
Million Bells	Cherry Pink	6.0	6.0	6.0	7	18	SUN
Million Bells	Trailing Blue 09	6.0	5.5	5.8	7	16	SUN
Million Bells	Trailing Yellow	7.0	6.0	6.5	8	18	SUN
Noa	Almond Blossom	6.8	6.0	6.4	7	15	DAN
Noa	Black Purple	6.5	6.0	6.3	10	22	DAN
Noa	Dark Pink Carnival	6.5	6.0	6.3	8	14	DAN
Noa	Mango Eye Imp	6.5	6.0	6.3	8	15	DAN
Noa	Mega Magenta	7.0	6.0	6.5	8	18	DAN
Noa	Mega Pink	6.0	6.0	6.0	8	14	DAN
Noa	Mega Raspberry	6.3	5.5	5.9	8	10	DAN
Noa	Mega Violet	5.0	6.0	5.5	3	10	DAN
Noa	Orange Blossom	6.0	6.5	6.3	7	16	DAN
Noa	Peach	5.0	6.0	5.5	3	6	DAN
Noa	Red Glaze	6.5	6.0	6.3	9	18	DAN
Noa	Red Wine	6.5	6.0	6.3	10	20	DAN
Noa	Salmon	5.3	6.0	5.6	7	10	DAN
Noa	Sunrise	5.5	6.5	6.0	6	13	DAN
Noa	Sunset	7.0	6.0	6.5	10	24	DAN
Noa	Tangerine	5.5	6.3	5.9	6	10	DAN
Noa	White	7.0	6.0	6.5	8	22	DAN
Superbells	Blackberry Punch	5.0	6.0	5.5	3	8	PW
Superbells	Blue	6.5	6.0	6.3	8	14	PW
Superbells	Cherry Blossom	5.5	6.0	5.8	3	8	PW
Superbells	Cherry Red	6.0	6.0	6.0	6	11	PW
Superbells	Coral	6.8	6.0	6.4	10	15	PW
Superbells	Coralberry Punch	5.5	6.5	6.0	9	15	PW
Superbells	Dreamsicle	5.8	6.0	5.9	5	12	PW
Superbells	Lavender	7.0	6.0	6.5	10	20	PW
Superbells	Pink	6.0	6.0	6.0	7	14	PW
Superbells	Plum	5.5	5.5	5.5	4	12	PW
Superbells	Red	6.0	6.0	6.0	10	16	PW
Superbells	Saffron	6.5	6.5	6.5	8	12	PW
Superbells	Scarlet	5.5	6.0	5.8	6	12	PW
Superbells	Tequila Sunrise	6.5	6.0	6.3	9	16	PW
Superbells	White	5.8	6.0	5.9	6	14	PW
Superbells	Yellow	6.0	6.0	6.0	8	14	PW
Superbells	Yellow Chiffon	7.0	6.0	6.5	8	16	PW

### **Celosia**

These Celosias do well in both the field and containers.

Table 79. Container grown performance of select varieties of Celosia in Kansas

<b>Cultivar</b>	<b>Color</b>	<b>V</b>	<b>F</b>	<b>Overall</b>	<b>Ht(in)</b>	<b>Wd (in)</b>	<b>Source</b>
WATCH		7.0	5.5	6.3	22	22	Local
Smart Look	Red	6.0	6.5	6.3	14	14	BEN

(See also Seed Propagated – *Celosia*)

### **Coleus**

Most of the Coleus did as well or better than those grow in the field trials. The seed coleus Versa series in particular received much higher marks in containers and three of the colors qualify for Prairie Star container recommendations: Burgundy to Green, Crimson Gold, and Lime. Unlike the others, Mosaik had a strong flower display in combination with the colored foliage.

Table 80. Container grown performance of select varieties of Coleus in Kansas

<b>Cultivar</b>	<b>Color</b>	<b>V</b>	<b>F</b>	<b>Overall</b>	<b>Ht(in)</b>	<b>Wd (in)</b>	<b>Source</b>
ColorBlaze	Alligator Tears	7.0	5.0	6.0	24	30	PW
ColorBlaze	Dark Star	6.5	6.0	6.3	24	20	PW
ColorBlaze	Dipt in Wine	7.0	6.0	6.5	16	18	PW
ColorBlaze	Kingswood Torch	6.0	5.8	5.9	15	18	PW
ColorBlaze	LifeLime	7.0	5.5	6.3	15	20	PW
ColorBlaze	Royal Glissade	7.0	6.0	6.5	20	24	PW
ColorBlaze	Sedona	7.0	6.0	6.5	18	22	PW
Limon Blush		6.3	5.5	5.9	22	18	PW
Mosaik	Lava Red	6.0	6.0	6.0	18	18	SYN
Versa	Burgundy to Green	7.0	5.0	6.0	22	28	PA
Versa	Crimson Gold	6.5	6.0	6.3	18	14	PA
Versa	Lime	7.0	5.5	6.3	24	24	PA
Versa	Rose to Lime	5.0	6.0	5.5	12	12	PA
Versa	Watermelon	5.0	6.0	5.5	12	16	PA

(See also Seed Propagated and Vegetatively Propagated – *Coleus*)

### **Colocasia**

These Colocasia cultivars add some new interest to container plantings. Diamond Head has very striking black leaves. Pink China and Elena are a little more subdued but have excellent plant growth.

Table 81. Container grown performance of select varieties of Colocasia in Kansas

<b>Cultivar</b>	<b>Color</b>	<b>V</b>	<b>F</b>	<b>Overall</b>	<b>Ht(in)</b>	<b>Wd (in)</b>	<b>Source</b>
Diamond Head		6.0	7.0	6.5	40	46	Local
Pink China		7.0	6.0	6.5	25	38	Local
Elena		7.0	6.0	6.5	39	42	Local

(See also Vegetatively Propagated – *Colocasia*)

## ***Euphorbia***

Diamond Frost needs no introduction on its use as a container plant - it's always fantastic!  
Burgundy Wine is an interesting *Euphorbia* with very dark foliage and an almost *Eucalyptus*-like look.

Table 82. Container grown performance of select varieties of *Euphorbia* in Kansas

<b>Cultivar</b>	<b>Color</b>	<b>V</b>	<b>F</b>	<b>Overall</b>	<b>Ht(in)</b>	<b>Wd (in)</b>	<b>Source</b>
Diamond Frost		6.8	6.0	6.4	17	20	PW
Burgundy Wine		5.0	7.0	6.0	30	34	Local

(See also Vegetatively Propagated – *Euphorbia*)

## ***Geranium***

The *Geraniums* had average performances in the container trials. The plants were very late to take off.

Table 83. Container grown performance of select varieties of *Geranium* in Kansas

<b>Cultivar</b>	<b>Color</b>	<b>V</b>	<b>F</b>	<b>Overall</b>	<b>Ht(in)</b>	<b>Wd (in)</b>	<b>Source</b>
Caliente	Orange	5.5	6.0	5.8	8	12	SYN
Pinto	Red	5.5	6.0	5.8	10	12	SYN
Rosita		5.5	6.0	5.8	7	10	SYN
Tango	White 11	5.0	6.0	5.5	8	12	SYN

(See also Seed Propagated and Vegetatively Propagated – *Geranium*)

## ***Gerbera***

All the *Gerberas* trialed had impressive stamina through the Kansas heat. *Garvinea Oranina*, *Santana* and *Sunny* were the best performing of the bunch and they deserve a look as novelty container plants in this climate.

Table 84. Container grown performance of select varieties of *Gerbera* in Kansas

<b>Cultivar</b>	<b>Color</b>	<b>V</b>	<b>F</b>	<b>Overall</b>	<b>Ht(in)</b>	<b>Wd (in)</b>	<b>Source</b>
<i>Garvinea</i>	Jilly	5.5	6.0	5.8	18	15	FLR
<i>Garvinea</i>	Lisa	5.8	5.8	5.8	14	16	FLR
<i>Garvinea</i>	Orangina	7.0	6.0	6.5	23	19	FLR
<i>Garvinea</i>	Santana	7.0	5.5	6.3	15	21	FLR
<i>Garvinea</i>	Sunny	7.0	6.0	6.5	24	20	FLR
Jaguar	Fire Dark Center	6.0	5.5	5.8	10	15	SYN

(See also Vegetatively Propagated – *Geranium*)

## ***Gomphrena***

Las Vegas Gomphrena is a fun series to have in containers. The colorful globe flowers add some interest, great texture and had a bit of a cascading effect by the end of the season.

Table 85. Container grown performance of select varieties of Gomphrena in Kansas

<b>Cultivar</b>	<b>Color</b>	<b>V</b>	<b>F</b>	<b>Overall</b>	<b>Ht(in)</b>	<b>Wd (in)</b>	<b>Source</b>
Las Vegas	(Pink, Purple, White mix)	6.5	5.5	6.0	14	23	PA

(See also Seed Propagated– *Gomphrena*)

## ***Impatiens***

There was some separation of Impatiens cultivars when faced with adversity in this year's trial. Super Elfin XP Rose Starburst received the best overall rating, while the SunPatiens also did well and should be retrialed.

Table 86. Container grown performance of select varieties of Impatiens in Kansas

<b>Cultivar</b>	<b>Color</b>	<b>V</b>	<b>F</b>	<b>Overall</b>	<b>Ht(in)</b>	<b>Wd (in)</b>	<b>Source</b>
Jambalaya	White Imp	6.0	6.0	6.0	14	18	SYN
Rockapulco	Appleblossom	5.0	5.5	5.3	6	12	PW
Rockapulco	Dark Orange	6.0	6.0	6.0	15	18	PW
Rockapulco	Orchid	5.5	5.5	5.5	9	12	PW
Rockapulco	Purple	6.0	6.0	6.0	12	15	PW
Rockapulco	Rose	5.3	6.0	5.6	11	14	PW
Rockapulco	White	6.5	5.5	6.0	14	18	PW
SunPatiens	Lavender	6.0	6.0	6.0	21	22	Local
SunPatiens	Magenta	6.0	6.0	6.0	23	24	Local
SunPatiens	Orange	6.0	6.0	6.0	17	20	Local
SunPatiens	Red	6.0	6.0	6.0	17	20	Local
SunPatiens	White	6.0	6.0	6.0	21	25	Local
Super Elfin XP	Red Starburst	5.0	6.0	5.5	10	15	PA
Super Elfin XP	Rose Starburst	6.3	6.0	6.1	11	20	PA
Super Elfin XP	Violet Starburst	5.0	6.0	5.5	9	14	PA
Patchwork	Peach Prism	5.3	6.0	5.6	5	7	BFP
Patchwork	Pink Shades	5.0	5.5	5.3	12	14	BFP

(See also Seed Propagated and Vegetatively Propagated –*Impatiens*)

### ***Impatiens, New Guinea***

It was an unusually difficult year for the New Guineas. They struggled to get established and never reached the degree of vigor and floriferousness that we are accustomed to.

Table 87. Container grown performance of select varieties of New Guinea *Impatiens* in Kansas, in shade

<b>Cultivar</b>	<b>Color</b>	<b>V</b>	<b>F</b>	<b>Overall</b>	<b>Ht (in)</b>	<b>Wd (in)</b>	<b>Source</b>
Infinity	Blushing Crimson	5.0	5.5	5.3	3	5	PW
Infinity	Blushing Lilac	5.5	5.5	5.5	6	8	PW
Infinity	Crimson	5.5	5.8	5.6	10	10	PW
Infinity	Dark Salmon Glow	5.0	5.5	5.3	6	8	PW
Infinity	Orange Frost	6.0	5.5	5.8	8	10	PW
Infinity	Pink	5.0	5.8	5.4	4	6	PW
Infinity	Pink Frost	5.5	5.5	5.5	12	10	PW
Infinity	Red	5.0	5.5	5.3	8	8	PW

(See also Vegetatively Propagated – *Impatiens, New Guinea*)

### ***Ipomoea (Sweet Potato)***

It's no surprise that the Ipomeas did well in the container trials. Both the Illusion and Sweet Caroline series are on the Prairie Star list.

Table 88. Container grown performance of select varieties of Sweet Potato in Kansas

<b>Cultivar</b>	<b>Color</b>	<b>V</b>	<b>F</b>	<b>Overall</b>	<b>Ht(in)</b>	<b>Wd (in)</b>	<b>Source</b>
Illusion	Emerald Lace	7.0	6.0	6.5	14	28	PW
Illusion	Midnight Lace	7.0	6.0	6.5	18	30	PW
Sweet Caroline	Green Yellow	7.0	5.0	6.0	16	30	PW
Sweet Caroline	Light Green	7.0	6.0	6.5	14	30	PW
Sweet Caroline	Purple	7.0	6.0	6.5	15	20	PW
Sweet Caroline	Red	7.0	6.0	6.5	16	38	PW
Sweet Caroline	Sweetheart Light Green	7.0	5.5	6.3	12	24	PW

(See also Vegetatively Propagated – *Ipomoea*)

### ***Lantana***

The Luscious Lantanas are very vigorous container plants, with the Lemonade having the best flower display in the series.

Table 89. Container grown performance of select varieties of Lantana in Kansas

<b>Cultivar</b>	<b>Color</b>	<b>V</b>	<b>F</b>	<b>Overall</b>	<b>Ht(in)</b>	<b>Wd (in)</b>	<b>Source</b>
Luscious	Citrus	7.0	6.0	6.5	28	40	PW
Luscious	Grape	7.0	5.5	6.3	10	30	PW
Luscious	Lemonade	7.0	6.5	6.8	16	36	PW
Luscious	Tropical Punch	7.0	6.0	6.5	14	30	PW

(See also Vegetatively Propagated – *Lantana*)

### ***Lobularia***

Snow Princess has done better in the field trials than in containers. It is very sensitive to water stress and can't get too dry or else it loses the flowers.

Table 90. Container grown performance of select varieties of *Lobularia* in Kansas

<b>Cultivar</b>	<b>Color</b>	<b>V</b>	<b>F</b>	<b>Overall</b>	<b>Ht(in)</b>	<b>Wd (in)</b>	<b>Source</b>
Snow Princess		6.0	5.5	5.8	11	18	PW

(See also Vegetatively Propagated – *Lobularia*)

### ***Mandevilla***

The Sun Parasols were a big hit in the container trials. The Giants had breathtakingly large flowers that continued blooming all season. The Pretty series, though smaller by design, had reduced vigor than the others.

Table 91. Container grown performance of select varieties of *Mandevilla* in Kansas

<b>Cultivar</b>	<b>Color</b>	<b>V</b>	<b>F</b>	<b>Overall</b>	<b>Ht(in)</b>	<b>Wd (in)</b>	<b>Source</b>
Sun Parasol	Crimson	6.0	6.0	6.0	15	28	SUN
Sun Parasol	Giant Crimson	6.0	6.0	6.0	12	80	SUN
Sun Parasol	Giant White	6.0	6.0	6.0	16	80	SUN
Sun Parasol	Pink	6.0	6.0	6.0	15	24	SUN
Sun Parasol	Pretty Crimson	5.5	6.0	5.8	12	36	SUN
Sun Parasol	Pretty Pink	5.5	6.0	5.8	9	16	SUN

### ***Mercardonia***

Gold Dust looked nice in its container planting. The trailing foliage and small yellow flowers took on a delicate look that was very visually appealing, but has to be seen up close to be appreciated.

Table 92. Container grown performance of select varieties of *Mercardonia* in Kansas

<b>Cultivar</b>	<b>Color</b>	<b>V</b>	<b>F</b>	<b>Overall</b>	<b>Ht(in)</b>	<b>Wd (in)</b>	<b>Source</b>
Gold Dust		6.3	6.0	6.1	6	20	PW

(See also Vegetatively Propagated – *Mercardonia*)

## Ornamental Grass

All the trialed Ornamental Grasses performed at a very high level. Pennisetum Vertigo had the advantage of incredible growth and stature along with its dark purple foliage. Melinis Savannah is a late bloomer but can add a lot to a container when other plants start to fade. The pink color of the plumes only intensifies as the nights get cooler.

Table 93. Container grown performance of select varieties of Ornamental Grass in Kansas

Cultivar	Color	V	F	Overall	Ht(in)	Wd (in)	Source
Carex	Toffee Twist	6.0	6.0	6.0	12	18	PW
Cyperus papyrus	Baby Tut	6.5	6.0	6.3	30	32	PW
Juncus	Blue Mohawk	6.5	6.0	6.3	28	32	PW
Melinis	Savannah	6.5	5.5	6.0	20	28	Local
Pennisetum	Red Riding Hood	6.5	6.0	6.3	35	30	PW
Pennisetum	Vertigo	7.0	6.5	6.8	40	30	PW
Pennisetum	Fireworks	6.5	6.0	6.3	24	24	PW

(See also Seed Propagated and Vegetatively Propagated – Ornamental Grass)

## Ornamental Millet

Jade Princess is highly recommended as a container plant. It would be great planted in front of a business because everyone who sees it wants to get close! The big flower spikes are irresistible and the compact nature of the plant makes it easy to care for.

Table 94. Container grown performance of select varieties of Ornamental Millet in Kansas

Cultivar	Color	V	F	Overall	Ht(in)	Wd (in)	Source
Jade Princess		6.5	6.0	6.3	33	16	PA

(See also Seed Propagated – Ornamental Millet)

## Ornamental Pepper

These two peppers continue to be great foliage plants and add a unique look to containers with their mottled purple leaves.

Table 95. Container grown performance of select varieties of Ornamental Pepper in Kansas

Cultivar	Color	V	F	Overall	Ht(in)	Wd (in)	Source
Calico		6.5	6.0	6.3	10	18	PA
Purple Flash		6.0	6.0	6.0	12	18	PA

(See also Seed Propagated – Ornamental Pepper)

### ***Penstemon***

The Penstemons were not great performers in the container trials. Not surprisingly they had improved growth than the plants in the field trials, but there was still very little bloom.

Table 96. Container grown performance of select varieties of Penstemon in Kansas

<b>Cultivar</b>	<b>Color</b>	<b>V</b>	<b>F</b>	<b>Overall</b>	<b>Ht(in)</b>	<b>Wd (in)</b>	<b>Source</b>
Experimental	Red/White Bicolor	6.0	4.5	5.3	10	10	AAS
Scarlet Queen		6.0	4.5	5.3	12	10	AAS

(See also Seed Propagated– *Penstemon*)

### ***Pentas***

Kaleidoscope Pink was a remarkably beautiful container plant. Towards the end of the season it received very high marks for bloom and people were really drawn to the flowers. Northern Lights Lavender is another great cultivar that blooms earlier in the Kansas climate.

Table 97. Container grown performance of select varieties of Pentas in Kansas

<b>Cultivar</b>	<b>Color</b>	<b>V</b>	<b>F</b>	<b>Overall</b>	<b>Ht(in)</b>	<b>Wd (in)</b>	<b>Source</b>
Kaleidoscope	Deep Rose	5.5	6.0	5.8	16	12	BEN
Kaleidoscope	Pink	6.5	5.8	6.1	14	12	BEN
Northern Lights	Lavender	6.5	5.5	6.0	16	14	BEN

(See also Seed Propagated– *Pentas*)

### ***Petchoa***

Calitunia Purple looked nice in a container planting. It was more vigorous than most of the Calibrachoa cultivars.

Table 98. Container grown performance of select varieties of Petchoa in Kansas

<b>Cultivar</b>	<b>Color</b>	<b>V</b>	<b>F</b>	<b>Overall</b>	<b>Ht(in)</b>	<b>Wd (in)</b>	<b>Source</b>
Calitunia	Purple	7.0	5.5	6.3	8	12	DAN

(See also Vegetatively Propagated– *Petchoa*)

## ***Petunia***

Phantom Petunia had the best growth of the “Black Petunia” series in the container trials. It got very good overall marks. As far as container recommendations for the Prairie Star list goes, Soleil Purple and Sophistica Lime Bicolor have made the list. Supertunia Pretty Much Picasso is best grown in a container and received better marks this year than last season displaying improved vigor.

Table 99. Performance of select varieties of Petunia in Kansas

<b>Cultivar</b>	<b>Color</b>	<b>V</b>	<b>F</b>	<b>Overall</b>	<b>Ht(in)</b>	<b>Wd (in)</b>	<b>Source</b>
Black Velvet		5.8	6.0	5.9	11	20	BFP
Phantom		6.5	6.0	6.3	14	18	BFP
Pinstripe		5.8	6.0	5.9	8	16	BFP
Plush	Rose	5.8	6.0	5.9	10	18	SYN
Soleil	Purple	7.0	6.0	6.5	10	28	SEL
Sophistica	Antique Shades	5.0	6.0	5.5	8	18	PA
Sophistica	Blue Morn	5.0	6.0	5.5	8	16	PA
Sophistica	Lime Bicolor	6.0	6.0	6.0	8	18	PA
Supertunia	Pretty Much Picasso	7.0	5.5	6.3	9	20	PW

(See also Seed Propagated and Vegetatively Propagated – *Petunia*)

## ***Phlox***

Containers are definitely a good way to grow Intensia Phlox in Kansas. This is the second year of strong marks for Lavender Glow.

Table 100. Container grown performance of select varieties of Phlox in Kansas

<b>Cultivar</b>	<b>Color</b>	<b>V</b>	<b>F</b>	<b>Overall</b>	<b>Ht(in)</b>	<b>Wd (in)</b>	<b>Source</b>
Intensia	Blueberry	6.0	6.0	6.0	9	18	PW
Intensia	Cabernet	6.5	6.0	6.3	8	18	PW
Intensia	Lavender Glow	6.5	6.0	6.3	10	20	PW
Intensia	Pink	6.5	6.0	6.3	9	20	PW
Intensia	White	6.0	6.0	6.0	9	14	PW
Intensia	White Imp	6.0	6.0	6.0	8	18	PW
Intensia	Orchid Blast	6.0	6.0	6.0	8	14	PW

### ***Plectranthus***

Silver Crest is fantastic in containers. Its cascading habit is perfect for overflowing the sides of the pot and the thick, textured foliage adds some distinction.

Table 101. Container grown performance of select varieties of *Plectranthus* in Kansas

<b>Cultivar</b>	<b>Color</b>	<b>V</b>	<b>F</b>	<b>Overall</b>	<b>Ht(in)</b>	<b>Wd (in)</b>	<b>Source</b>
Silver Crest		7.0	5.3	6.1	8	40	PA

(See also Seed Propagated – *Plectranthus*)

### ***Portulaca (Purslane)***

The Pazazz series did well in both the field and container trials. It will be added to the Prairie Star list this year. Salmon glow had the strongest vigor and bloom in the container trials, but all the colors received high marks.

Table 102. Container grown performance of select varieties of *Portulaca* in Kansas

<b>Cultivar</b>	<b>Color</b>	<b>V</b>	<b>F</b>	<b>Overall</b>	<b>Ht (in)</b>	<b>Wd (in)</b>	<b>Source</b>
Pazazz	Pink Glow	6.5	6.0	6.3	8	30	DAN
Pazazz	Ultra Pink	6.5	6.0	6.3	10	20	DAN
Pazazz	Salmon Glow	7.0	6.5	6.8	10	30	DAN
Pazazz	Tangerine	6.8	6.0	6.4	10	20	DAN
Pazazz	Vivid Yellow	6.0	6.0	6.0	11	18	DAN

(See also Seed Propagated and Vegetatively Propagated – *Portulaca*)

### ***Sedum***

Lemon Coral continues to display outstanding foliagiferousness. It stays compact but delivers a splash of bright yellow-green to container gardens.

Table 103. Container grown performance of select varieties of *Sedum* in Kansas

<b>Cultivar</b>	<b>Color</b>	<b>V</b>	<b>F</b>	<b>Overall</b>	<b>Ht(in)</b>	<b>Wd (in)</b>	<b>Source</b>
Lemon Coral		6.0	6.0	6.0	8	20	PW

## **Torenia**

The Torenia looked excellent in the containers this year. All the cultivars were very vigorous and overflowed the pots, with Catalina Pink being the most floriferous.

Table 104. Container grown performance of select varieties of Torenia in Kansas

<b>Cultivar</b>	<b>Color</b>	<b>V</b>	<b>F</b>	<b>Overall</b>	<b>Ht(in)</b>	<b>Wd (in)</b>	<b>Source</b>
Catalina	Blue	7.0	5.3	6.1	12	20	PW
Catalina	Gilded Grape	7.0	5.0	6.0	12	19	PW
Catalina	Midnight Blue	7.0	5.5	6.3	17	28	PW
Catalina	Pink	7.0	6.0	6.5	12	20	PW
Catalina	White Linen	7.0	5.0	6.0	12	22	PW
Summer Wave	Large Blue	7.0	5.0	6.0	12	22	SUN

(See also Vegetatively Propagated – *Torenia*)

## Prairie Star Collection 2011

### **Plants for Flower Display:**

<u>Flower</u>	<u>Cultivar/Color</u>		
Ageratum	Artist Series (All Colors)	Geranium	Classic Salmon
Ageratum	High Tide Blue	Geranium	Contessa Dark Red
Angelonia	Angelface Series (All Colors)	Geranium	Fidelity Salmon
Angelonia	Serena White	Geranium	Fireworks Cherry
Begonia	Ambassador Pink	Geranium	Galleria Bright Sunrise (Orange/Red)
Begonia	Baby WingWhite	Geranium	Galleria SnowFire (Pale Pink Bi-color)
Begonia	BIG Series (All Colors)	Geranium	Maverick Star
Begonia	Brandy (Pink/Dark leaves)	Geranium	Patriot White
Begonia	Doublet Series (All Colors)	Geranium	Patriot Bright Red
Begonia	Dragon Wing Red	Geranium	Patriot Watermelon
Begonia	Olympia Rose	Geranium	Rocky Mountain Series (All Colors)
Begonia	Olympia White	Geranium	Showcase Light Lavender
Begonia	Party Pink (Bronze Leaf)	Geranium	Showcase Salmon
Begonia	Vodka (Red/Dark Leaves)	Geranium, seed	BullsEye Light Pink
Begonia	Whisky (White/Dark Leaves)	Geranium, seed	Pinto Series (All Colors)
Canna	Chocolate Sunrise	Geranium , seed	Ringo 2000 Lavender
Canna	Magic Pink	Geranium, Exotic	Crystal Palace Gem
Canna	Rosita	Geranium, Exotic	Caliente Coral Pink
Canna	Shining Diva	Geranium, Exotic	Caliente Rose
Celosia	Cramer's Amazon (Red)	Geranium, Exotic	Graffiti Double Red
Celosia	Flamingo Feather Purple	Geranium, Exotic	Graffiti Double Salmon
Celosia	Fresh Look Red	Gomphrena	Las Vegas Series (All Colors)
Celosia	Hi-Z (Purple)	Helenium	Dakota (Gold)
Celosia	New Look Red	Impatiens	Accent Coral
Celosia	Watch (Hot Pink)	Impatiens	Accent Lavender Blue
Cleome	Senorita Rosalita	Impatiens	Jambalaya Series (All Colors)
Cosmos	Cosmic Orange	Impatiens	Metallic Deep Salmon
Cosmos	Cosmic Mix	Impatiens	Showstopper Cherry
Dahlia	Dalina Grande Toluca	Impatiens	Showstopper Tropical Flair Mix
Dianthus	Amazon Neon Cherry	Impatiens	Stardust Rose Improved
Dianthus	Amazon Neon Purple	Impatiens	Super Elfin Blue Pearl
Echinacea	PowWow Wild Berry	Impatiens, Double	Fiesta Series (All Colors)
Euphorbia	Diamond Frost (White)	Impatiens, Double	Rockapulco Series (All Colors)
Gaillardia	Mesa Yellow	Impatiens, NG	Infinity Series (All Colors)
Gaillardia	Plume Series (All Colors)	Impatiens, NG	Super Sonic Cherry Cream
Gaillardia	Torch Series (All Colors)	Lantana	Bandana Series (All Colors)
Geranium	Americana Series (All Colors)	Lantana	Landmark Series (All Colors)
Geranium	Cascade Acapulco Compact (Pink/White)	Lantana	Luscious Series (All Colors)
Geranium	Cascade Lila Compact (Lavender/Pink)	Lantana	New Gold
Geranium	Cascade Sophie (Salmon/Pink)	Lantana	Patriot Hot Country (Bright Pink/Orange)
Geranium	Classic Dark Salmon	Lantana	The Desert Sunset (Pink/Orange/Yellow)

Lantana	Trailing Lavender	Petunia	Supertunia Vista Bubble Gum (Pink)
Lobularia	Snow Princess	Petunia	Supertunia Vista Fuchsia
Marigold	Antigua Primrose (Yellow)	Petunia	Supertunia Vista Silverberry
Marigold	Inca II Primrose (Yellow)	Petunia	Tidal Wave Series (All Colors)
Marigold	Inca II Yellow	Portulaca	Fairytales Series (All Colors)
Marigold	Moonsong Deep Orange	Portulaca	Pazazz Series (All Colors)
Marigold	Perfection Mix	Rudbeckia	Denver Daisy
Marigold	Perfection Yellow	Rudbeckia	Prairie Sun (Yellow)
Marigold	Taishan Series (All Colors)	Rudbeckia	Tiger Eye Gold
Melampodium	Derby (Orange)	Salvia farinacea	Reference Blue & White
Melampodium	Million Gold	Salvia farinacea	Sallyfun Series (All Colors)
Melampodium	Showstar Yellow	Salvia farinacea	Silver
Nierembergia	Augusta Blue Skies	Salvia farinacea	Victoria (blue)
Nierembergia	Mont Blanc (White)	Scaevola	Blue Shamrock
Pentas	Northern Lights Lavender	Scaevola	Blue Velvet
Petunia	Blushing Princess (White/Lavender)	Scaevola	New Wonder (Purple)
Petunia	Carpet Lilac	Scaevola	Outback Fan Dancer
Petunia	Cascadia Series (All Colors)	Scaevola	Outback Purple Fan Flower
Petunia	Dream Series (All Colors)	Scaevola	Whirlwind Blue
Petunia	Easy Wave Series (All Colors)	Snapdragon (Anthrrium)	Rocket Cherry
Petunia	Fantasy Crystal Red	Torenia	Catalina Blue
Petunia	Fantasy Mix	Verbena	Donalena Red Amour
Petunia	Hurrah Series (All Colors)	Verbena	Donalena Violet XL
Petunia	Kahuna, both colors, Violet and White	Verbena	Escapade Pink
Petunia	Littletonia Series (All Colors)	Verbena	Lanai Bright Pink
Petunia	Madness Series (All Colors)	Verbena	Lanai Lavender Star
Petunia	Marco Polo Odyssey (Lavender)	Verbena	Superbena Burgundy
Petunia	Misty Lilac Wave	Verbena	Superbena Large Lilac Blue
Petunia	Plush Series (All Colors)	Verbena	Tukana Scarlet Star
Petunia	Primetime Lavender	Verbena	Tukana White
Petunia	Primetime Rose	Vinca (Catharanthus)	Cooler Series (All Colors)
Petunia	Ray Series (All Colors)	Vinca (Catharanthus)	First Kiss Blueberry
Petunia	Shockwave Series (All Colors)	Vinca (Catharanthus)	Mediterranean Series (All Colors)
Petunia	Storm Series (All Colors)	Vinca (Catharanthus)	Nirvana Series (All Colors)
Petunia	Suncatcher Pink Vein	Vinca (Catharanthus)	Pacifica Series (All Colors)
Petunia	Suncatcher White	Vinca (Catharanthus)	Pacifica XP Series (All Colors)
Petunia	Supertunia Citrus	Vinca (Catharanthus)	Sunshower White with Eye
Petunia	Supertunia Cotton Candy	Vinca (Catharanthus)	Sunstorm Orchid
Petunia	Supertunia Bordeaux	Vinca (Catharanthus)	Sunstorm White with Eye
Petunia	Supertunia Giant Pink	Vinca (Catharanthus)	Titan Series (All Colors)
Petunia	Supertunia Lavender Pink	Zinnia	Crystal White
Petunia	Supertunia Lavender Skies	Zinnia	Oklahoma Series (All Colors)
Petunia	Supertunia Mini Series (All Colors)	Zinnia	Profusion Orange
Petunia	Supertunia Royal Magenta	Zinnia	Profusion Red
Petunia	Supertunia Royal Velvet (Purple)	Zinnia	Profusion White
Petunia	Supertunia White		

Zinnia	Short Stuff Orange
Zinnia	Star Orange
Zinnia	Zahara Series (All Colors)

***Plants for Foliage Display:***

<b><u>Flower</u></b>	<b><u>Cultivar/Color</u></b>
Basil (Ocimum)	Boxwood
Basil (Ocimum)	Pesto Perpetuo
Canna	Tropicana (Variegated Leaves Orange Bloom)
Coleus	Aurora Black Cherry
Coleus	Dark Chocolate
Coleus	Dipt in Wine
Coleus	Kaleidoscope Mix
Coleus	LifeLime
Coleus	Rainbow Mix
Coleus	Royal Glissade
Coleus	Stained Glassworks Kiwi Fern (Purple Green Red)
Coleus	Stained Glassworks Rose Explosion
Coleus	Saturn
Coleus	Sedona
Coleus	Wizard Scarlet
Colocasia	Coffee Cups
Colocasia	Heart of the Jungle
Cyperus papyrus	Baby Tut
Cyperus papyrus	King Tut
Dahlia	Mystic Illusion
Hibiscus	Maple Sugar
Ornamental Grass	Pennisetum Red Riding Hood
Ornamental Grass	Pennisetum Rubrum
Ornamental Millet	Jade Princess
Ornamental Millet	Jester
Ornamental Millet	Purple Majesty
Ornamental Pepper	Black Pearl
Ornamental Pepper	Calico
Ornamental Pepper	Chilly Chili (Red/Yellow)
Ornamental Pepper	Explosive Ember
Ornamental Pepper	Medusa
Ornamental Pepper	Purple Flash
Perilla	Magilla (Purple/Pink)
Sweet Potato (Ipomoea)	Ace of Spades

Sweet Potato (Ipomoea)	Blackie
Sweet Potato (Ipomoea)	Chillin Series (All Colors)
Sweet Potato (Ipomoea)	Illusion Series (All Colors)
Sweet Potato (Ipomoea)	Marguerite
Sweet Potato (Ipomoea)	Sidekick Series (All Colors)
Sweet Potato (Ipomoea)	Sweet Caroline Series (All Colors)
Sweet Potato (Ipomoea)	Tri Color
Talinum	Limon

***Plants for Containers\*:***

<b><u>Flower</u></b>	<b><u>Cultivar/Color</u></b>
Alternanthera	Royal Tapestry
Begonia	Sparkle Scarlet
Calibrachoa	Noa Mega Pink
Calibrachoa	Superbells Blue
Calibrachoa	Superbells Lavender
Calibrachoa	Superbells Red
Calibrachoa	Superbells Saffron
Calibrachoa	Superbells Yellow
Calibrachoa	Superbells Yellow Chiffon
Coleus	Kong Salmon Pink
Coleus	Versa Burgundy To Green
Coleus	Versa Crimson Gold
Coleus	Versa Lime
Coleus	Wizard Golden
Coleus	Wizard Scarlet
Dichondra	Silver Falls
Petunia	Soleil Purple
Petunia	Sophistica Lime Bicolor

*\*All Prairie Star Flowers are recommended for use in both containers and landscape plantings. The plants in this category displayed exemplary performances in the container trials, but it must be noted that some do not grow well when planted in the flower bed.*

# Prairie Bloom Collection 2011

## *Herbaceous Perennial Flowers*

---

### **Aster**

Blue Sapphire  
Hella Lacy  
Professor Kippenburg  
Raydon's Favorite  
September Ruby  
Joy Stick Red  
Wood's Blue  
Wood's Pink

### **Aster (*Boltonia*)**

Pink Beauty  
Snowbank

### **Beebalm (*Monarda*)**

Croftway Pink  
Marshall's Delight  
Violet Queen

### **Canna**

Tropicana

### **Carnation (*Dianthus*)**

King of the Blacks  
Little Jock

### **Catnip (*Nepeta*)**

Blue Wonder

### **Cheddar Pinks**

Bath's Pink  
Firewitch

### **Coreopsis (Tickseed)**

Baby Sun  
Early Sunrise  
Little Red Hen  
Sterntaler  
Sunburst

### **Daylily (*Hemerocallis*)**

Black Eyed Stella  
Bonanza  
Bumble Bee  
Butterpat  
California Sunshine  
Camden Gold Dollar  
Condilla  
Eenie Weenie  
George C. Bingham  
Gertrude Condon  
Happy Returns  
Hawaiian Party Dress  
Hyperion  
Ice Carnival  
Janice Brown

Jolyene Nichole  
Just Plum Happy  
Little Business  
Little Gypsy Vagabond  
Little Heavenly Angel  
Little Paul  
Louis Manelis  
Mauna Loa  
May May  
Ming Toy  
Night Beacon  
Pandora's Box  
Raspberry Pixie  
Regal Heir  
Rocket City  
Rose Petticoat  
Rosie Meyer  
Rosy Returns  
Royal Occasion  
Salmon Sheen  
Scarlet Orbit  
Scentual Sundance  
Siloam Double Classic  
Siloam June Bug  
Siloam Space Age  
Sounds of Silence  
Stella DeOro  
When My Sweetheart Returns  
Winsome Lady  
Woodside Amethyst  
Yellow Lollipop  
Zarahelma

### **Delosperma (Hardy Ice Plant)**

Pink

### **Echinacea (Coneflower)**

Magnus  
PowWow Wild Berry

### **Gaillardia (Blanket Flower)**

Goblin

### **Globe Thistle (*Echinops*)**

Blue Glow

### **Hen and Chicks (*Sedum*)**

Carmen

### **Heuchera (Coral Bells)**

City Lights  
Jade Gloss  
Raspberry Ice  
Stormy Seas

### **Hibiscus (Perennial Hibiscus)**

Anne Arundel  
Broadway Lights  
Blue River II  
Candy Stripe  
Fantasia  
Fireball  
Hardy Hibiscus  
Lady Baltimore  
Lasciocarpus  
Matterhorn  
Old Yella  
Pink Cloud  
Red  
Red Rainer  
Sweet Caroline

### **Hosta (Plantain Lily)**

Gold Drop  
Golden Tiara  
Krossa Regal  
Lemon Lime  
Pacific Blue Edger  
Parky's Prize  
Samuel Blue  
Striptease  
Sun and Substance

### **Iris**

Affirmative  
Amarillo Frills  
American Pride  
Autumn Riesling  
Bama Baby  
Be Good To Me  
Bishop John-David  
Bold Expression  
Breakers  
Cactus Moon  
Clothed in Glory  
Color My World  
Coming Storm  
Conservative View  
Copper Bubble Bath  
Cowboy in Black  
Crown Connection  
Decadence  
Dividing Line  
Dream Team  
Dreamville

Eleanor Roosevelt  
Elizabeth Noble  
Elsa Sass  
Eros  
Fabulous One  
Fair Game  
Fancy Gal  
Fashion Magic  
Florentine Silk  
Follow Your Dream  
Freckles  
Frosted Fantasy  
Fujisskies  
Gajus  
Greenbriar Pinnacle  
Guilt Free Sample  
Hanna's Folly  
Harvest Fair  
High Chapparral  
Holy Smoke  
Hot News  
In Focus  
I've Got a Secret  
Jack's Pick  
Jonathan Peretz  
Lacy Snowflake  
Liberty Classic  
Look Here  
Marjorie L  
Master Charles  
Midnight Mink  
Midsummer Night's Dream  
Miss Charlotte  
Missus Bee  
Mixed Up Kid  
Mojave Moonlight  
Morning Run  
Mystic Glow  
Nuclear Nancy  
Oklahoma Crude  
Pardner  
Paul Black  
Peggy Ann  
Petit Louvois  
Prague

Renegade Lady  
Romania, Romania  
Sailor's Dream  
Sari's Dance  
Sharper Image  
Shipshape  
Snow Flurry  
Soap Box  
Solo Flight  
Some Like it Hot  
Spectral Challenge  
Starry Starry Sky  
Stylized Blue  
Too Sweet  
Whoopsidaisy  
**Lamb's Ear (*Stachys*)**  
Cotton Ball  
**Lavender (*Lavandula*)**  
Dilly Dily  
Provence  
Twickle Purple  
**Mexican Hat (*Ratibida*)**  
Red  
**Mullein (*Verbascum*)**  
Violetta  
Yellow  
**Oriental Poppy (*Papaver*)**  
Brilliant  
**Ornamental Grass**  
Karl Foerster  
Overdam  
Wind Dancer  
**Peony (*Paeonia*)**  
Duchesse de Orleans  
Festiva Maxima  
Karl Rosenfield  
Sarah Bernhardt  
Shawnee Chief  
**Phlox (*Garden Phlox*)**  
David  
Laura  
Robert Poore  
**Pinks (*Dianthus*)**  
Kinsey Blue  
Oakington

Pink  
**Poppy Mallow (*Callirhoe*)**  
Wine-purple  
**Rudbeckia (Black Eyed Susan)**  
Goldstrum  
**Russian Sage (*Perovskia*)**  
Filagrin  
Longin  
**Salvia (Meadow Sage)**  
Amethyst  
Blue Hill  
Evolution  
May Night  
Plumosa  
Viola Klose  
**Sea Holly (*Erygium*)**  
Sapphire Blue  
**Sea Pink (*Armeria*)**  
Joy Stick Red  
Rubra  
**Sedum, Tall**  
Autumn Fire  
**Shasta Daisy (*Leucanthemum*)**  
Becky  
Thomas Killen  
**Sheffield Mum (*Dendranthema*)**  
Hillside Pink  
**Spotted Dead Nettle (*Lamium*)**  
Orchid Frost  
**Spurge (*Euphorbia*)**  
Fens Ruby  
niciana  
**Wandflower (*Gaura*)**  
Karalee Petite Pink  
Karalee White  
Stratosphere Pink Picotee  
**Wormwood (*Artemisia*)**  
Silver King  
Silver Mound  
**Yarrow (*Achillea*)**  
Coronation Gold  
Moonshine  
Schwellenberg  
Terra Cotta

## *Flowering Woody Perennials*

---

### **Rose, Shrub**

Austrian Copper  
Ballerina  
Baby Love  
Blanc Double de Corbet  
Carefree Beauty  
Carefree Delight  
Carefree Spirit  
Carefree Sunshine  
Champlain  
Chuckles  
Daydream  
Earth Song  
Funny Face  
Grootendorst Supreme  
Hansa  
Harrison's Yellow  
Home Run  
Blushing Knock Out  
Double Pink Knock Out  
Double Knock Out  
Pink Gnome  
Lady Elsie May  
Little Mischief  
Lovely Fairy  
Meidiland Crimson  
Meidiland Fire  
Meidiland Ice  
Meidiland Pink  
Meidiland Scarlet  
Moje Hammerberg  
Morden Centennial  
Morden Fireglow  
Nearly Wild  
Persian Yellow  
Prairie Joy  
Purple Pavement  
Rugosa  
Rugosa alba  
Sea Foam  
Showtime  
Sir Thomas Lipton  
Starry Night  
Sunrise Sunset  
Therese Bugnet  
Watercolors  
Wild Thing  
Yellow Brick Road

